



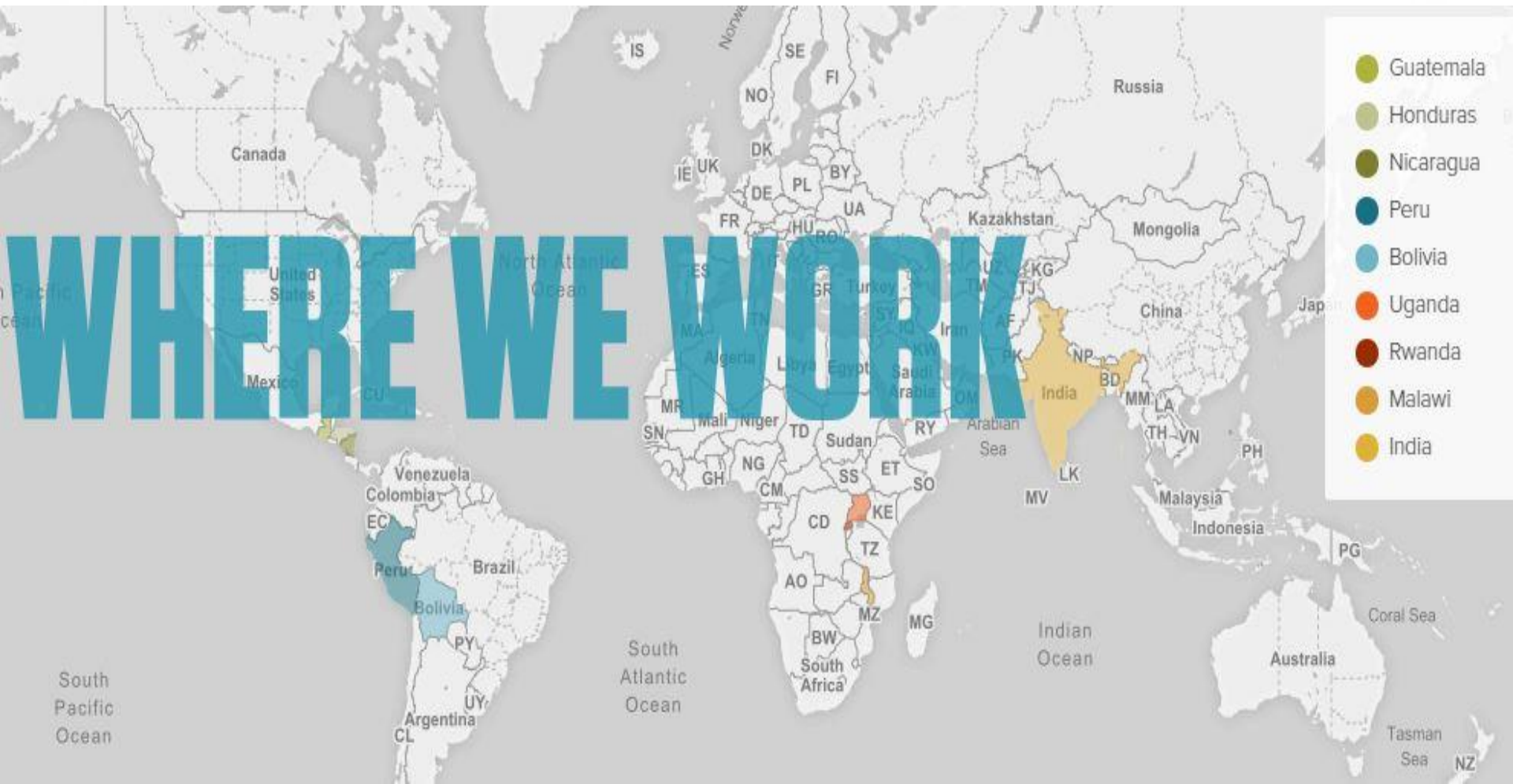
water for people

UGANDA everyone | forever

**Cate Nimanya, Country Director
Water for People - Uganda**

WATER FOR PEOPLE: ORGANIZATION OVERVIEW

Water For People is a next-generation international water and sanitation nonprofit that believes that investments made in water supply today must lead to lasting and transformative change both today and in the future. Water For People is unique in its emphasis on innovative programming, long-term support, and constant impact monitoring, which have set us apart as an ambitious water agency in a particularly crowded water community.



SMALL AND MEDIUM WATER ENTERPRISES

**JOINT TECHNICAL REVIEW
4TH TO 6TH APRIL 2017**

MBALE



PRESENTATION CONTENT

Small Water Enterprises Model (SWEM)

Medium Water Enterprises Model (MWEM)

Tools Used

Challenges

Lessons Learned

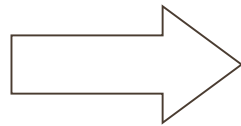
Way Forward



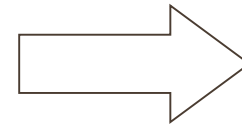
SMALL WATER ENTERPRISES MODEL



CBMS



Cluster of 5



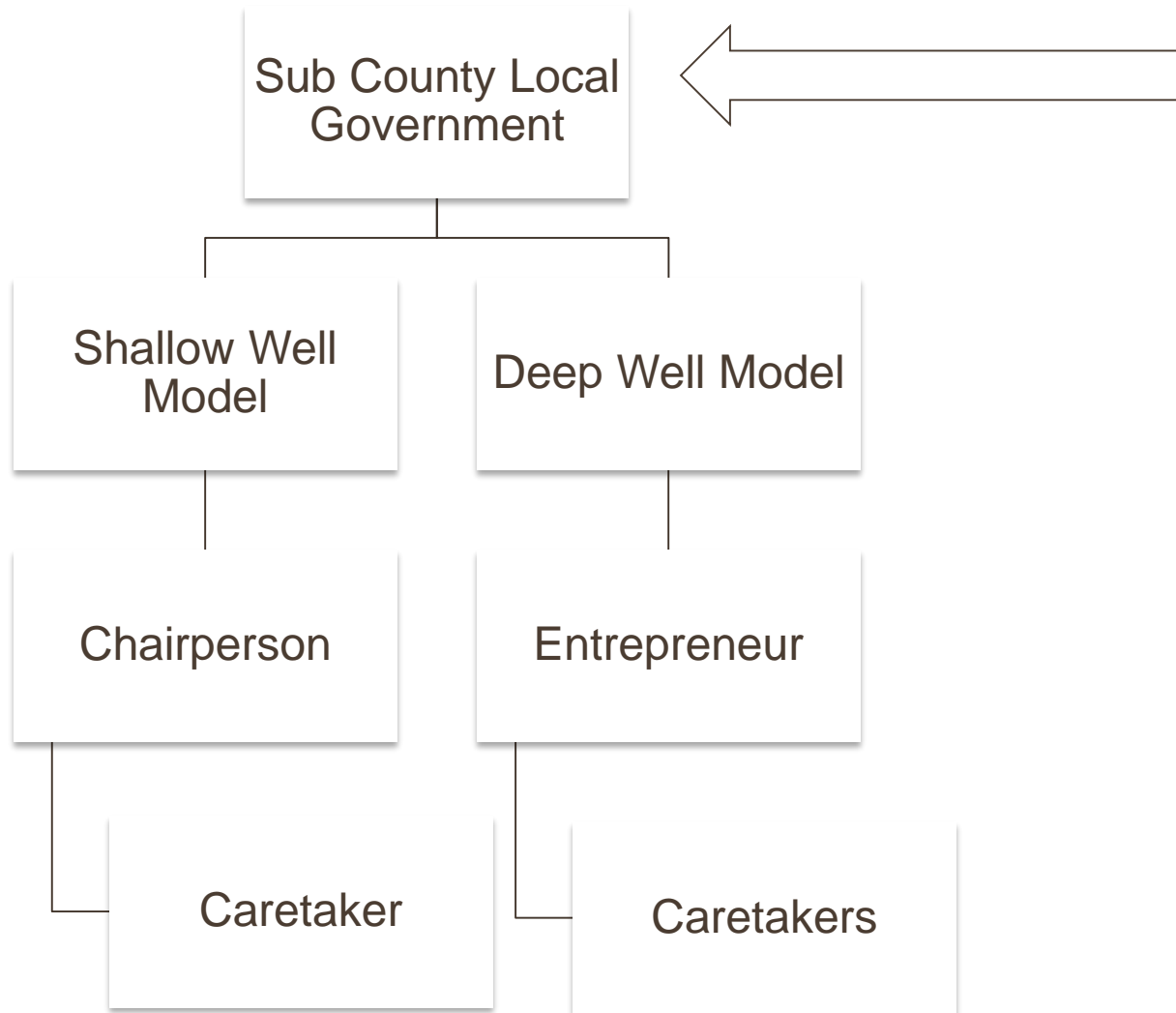
Cluster of 10
& above

Technology:

Metered Hand Pump. Cost of Modification 190,000UGX



MANAGEMENT



Escrow Account that accumulates savings for major repairs for all wells in the Sub-county (CapManEx) 15 Escrow Accounts have been opened.

water for people



Shallow Well

- Tariff is 2000UGX (\$0.8) per household per month**
- 50% of all monthly collections is remitted to the escrow account and the well Chairperson retains 50%**
- Caretaker is paid 20 % of all the monthly collections by the Chairperson per month
Chairperson is paid 30% of all monthly collections by self**
- Payment for routine and periodic maintenance of the well to the HPM is done at Sub County Level from the escrow account on an annual basis**
- All minor and major repairs are taken care of by the HPMA and paid on an annual basis**

Deep Well

- Tariff is 100UGX (\$0.04) per 20 – 25litre jerry can collected**
- 20% of all monthly collections are remitted to the escrow account for major repairs and the Entrepreneur retains 80% for minor repairs and other operations**
- Caretaker is paid a 50,000/= UGX (\$25) retainer and 15% of the money on each jerry can sold by the entrepreneur from the 80% per month**
- Payment for routine and periodic maintenance of the well to the HPM is done by the entrepreneur on a quarterly basis from the 80%**
- All minor repairs are taken care of by the entrepreneur through the HPMA as and when they occur**

PROGRESS

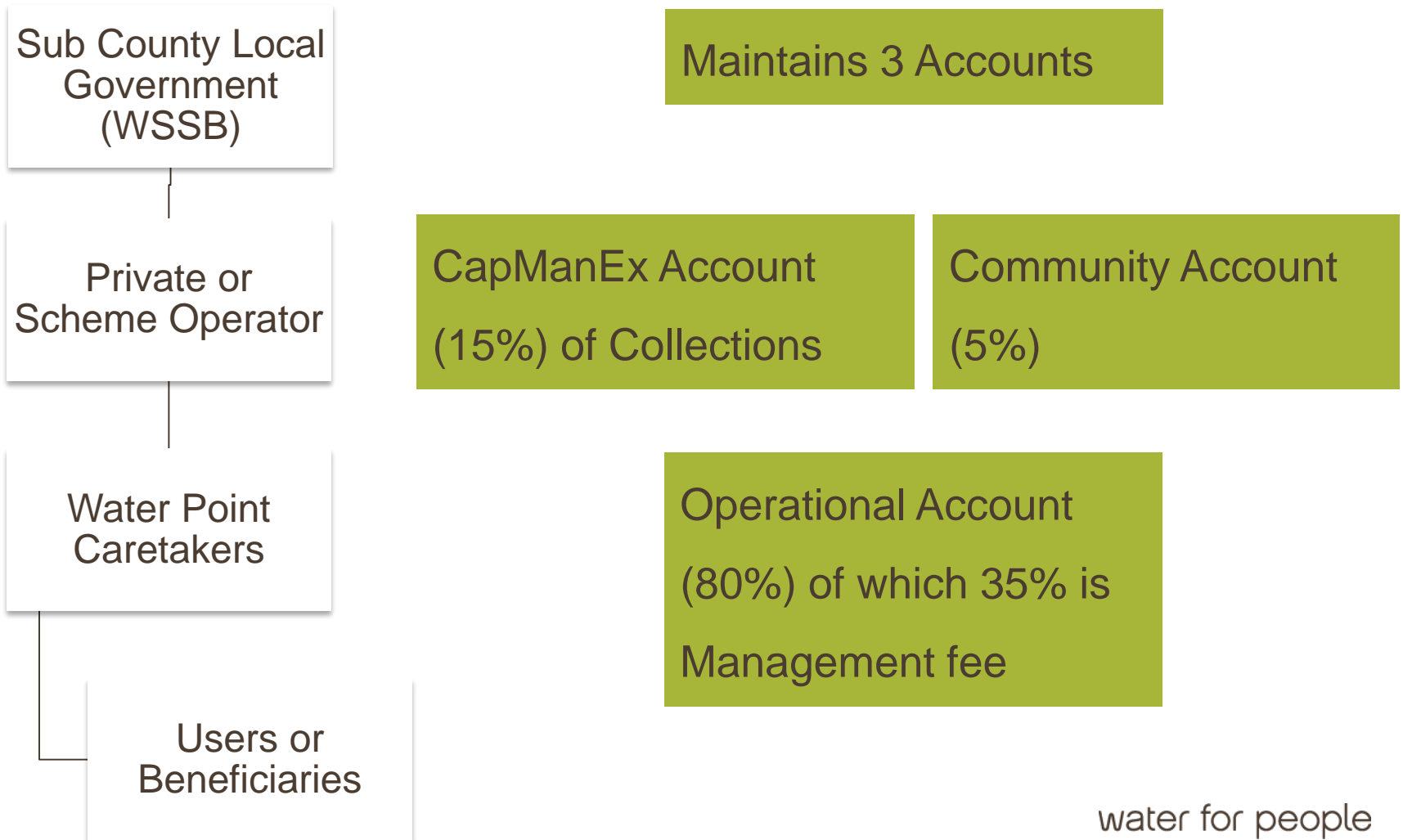
- 44 wells under the model (28 boreholes and 16 shallow wells)
- Divided into 3 clusters according to proximity (13, 12, 19)
- Each is managed by 2 HPMs (HPMA = 33 members)
- 44 Caretakers employed
- Escrow accounts have accumulated
.....



MEDIUM WATER ENTERPRISES MODEL



MANAGEMENT

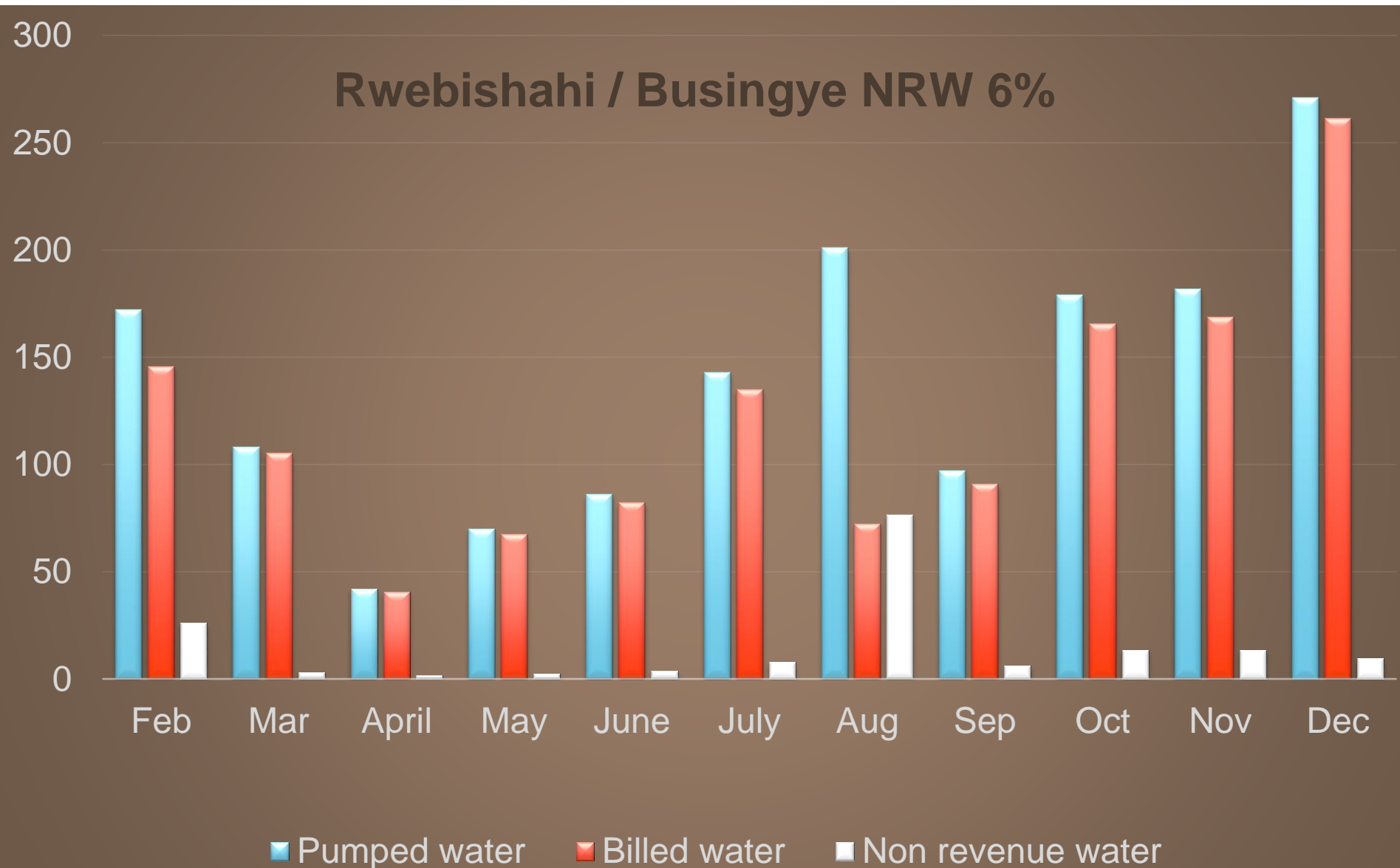


DETAILS OF THE WATER SYSTEMS

Name of System	Target Population	Amount Invested	Length of Distribution (Km)	Name of Operator	Number of Connections	Tariff	Average Monthly Revenue
Biguli - Kirinda	4,418	850,000,000	9.85	Biguli Traders Association	113	100	4,046,000
Malere – Butanda - Nyakabungo	2,906	500,000,000	7.812	Peter Taremwa	16	200	577,000
Rwebishahi	2,162	350,000,000	14.923	John Batuma	38	200	780000
Busingye-Buhumuriro	2,051	350,000,000	4.43	John Batuma	16	200	
Kabale - Keishunga	1,709	1,200,000,000	4.428	John Batuma	46	200	Just Started
Bitojo – Byantumo - Nyabubale	5,324	707,000,000	6.53	Isingoma Henry	68	200	Just Started
13 Communties	18,570	3,957,000,000	47.973		229		

VOLUME SUPPLIED VS VOLUME BILLED VS NRW

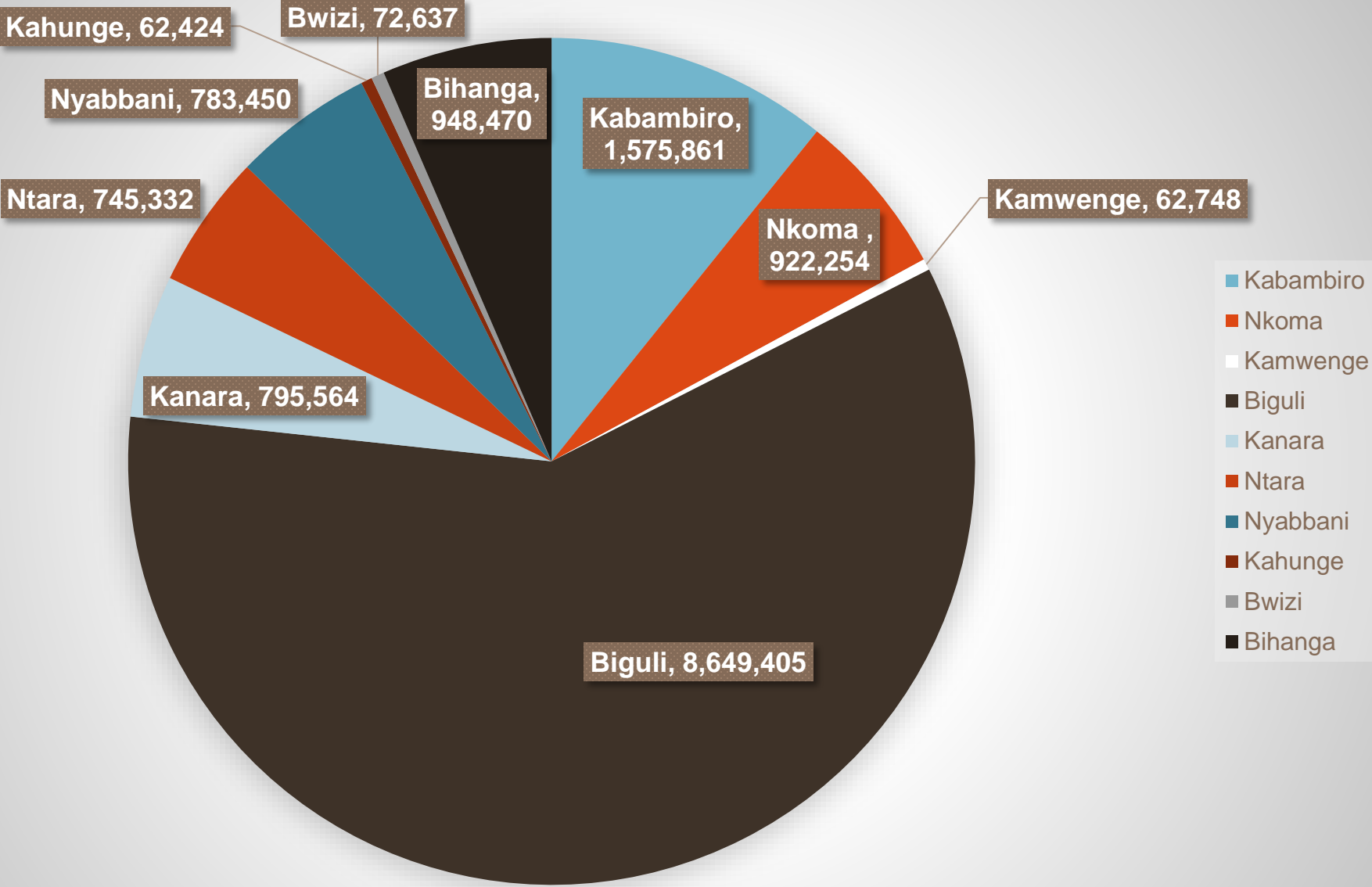
Rwebishahi / Busingye NRW 6%



STATUS OF SYSTEMS TO DATE

Name of System	Total Cash Collection	Total Expenditure	Profit / Loss	Existing Debts	CapManEx
Biguli - Kirinda	61,876,500	55,490,280	6,386,220	7,537,500	8,055,810
Rwebishahi / Busingye	7,805,400	7,195,600	609,800	871,372	440,000
Malere/Nyakabungo	6,356,570	4,433,504	1,923,066	188,600	266,000

ESCROW ACCOUNTS BALANCES ACROSS THE DISTRICT



TOOLS USED

ATWHATCOST

ASSET REGISTER & ANALYSIS

INVESTMENT PLANNING



CHALLENGES

1. High Tariffs
2. Source of energy
3. Poor banking systems



water for people

THANK YOU