

The logo features the word "WEYONJE!" in white, bold, uppercase letters inside a green oval with a red border. Below it, a white speech bubble contains the slogan "Build it. Use it. Empty it." in black text.

WEYONJE!

Build it. Use it. Empty it.

Towards Citywide Inclusive Sanitation in Kampala

Status Updates and Progress

Najib Bateganya Lukooya, Ph.D.

Deputy Director- Sanitation & Environment

Water and Environment JSR –September, 2019.

The logo consists of a stylized building icon above the acronym "KCCA" in large red letters. Below "KCCA" are the words "KAMPALA CAPITAL CITY AUTHORITY" and the tagline "For a better City" in smaller black text.

KCCA
KAMPALA CAPITAL CITY AUTHORITY
For a better City

VISION, MISSION, VALUES



Vision: “To be a Vibrant, Attractive and Sustainable

Mission: “To Deliver Quality Services in the City”

Core Values:

Client Care

Integrity

Teamwork

Innovativeness

Excellence

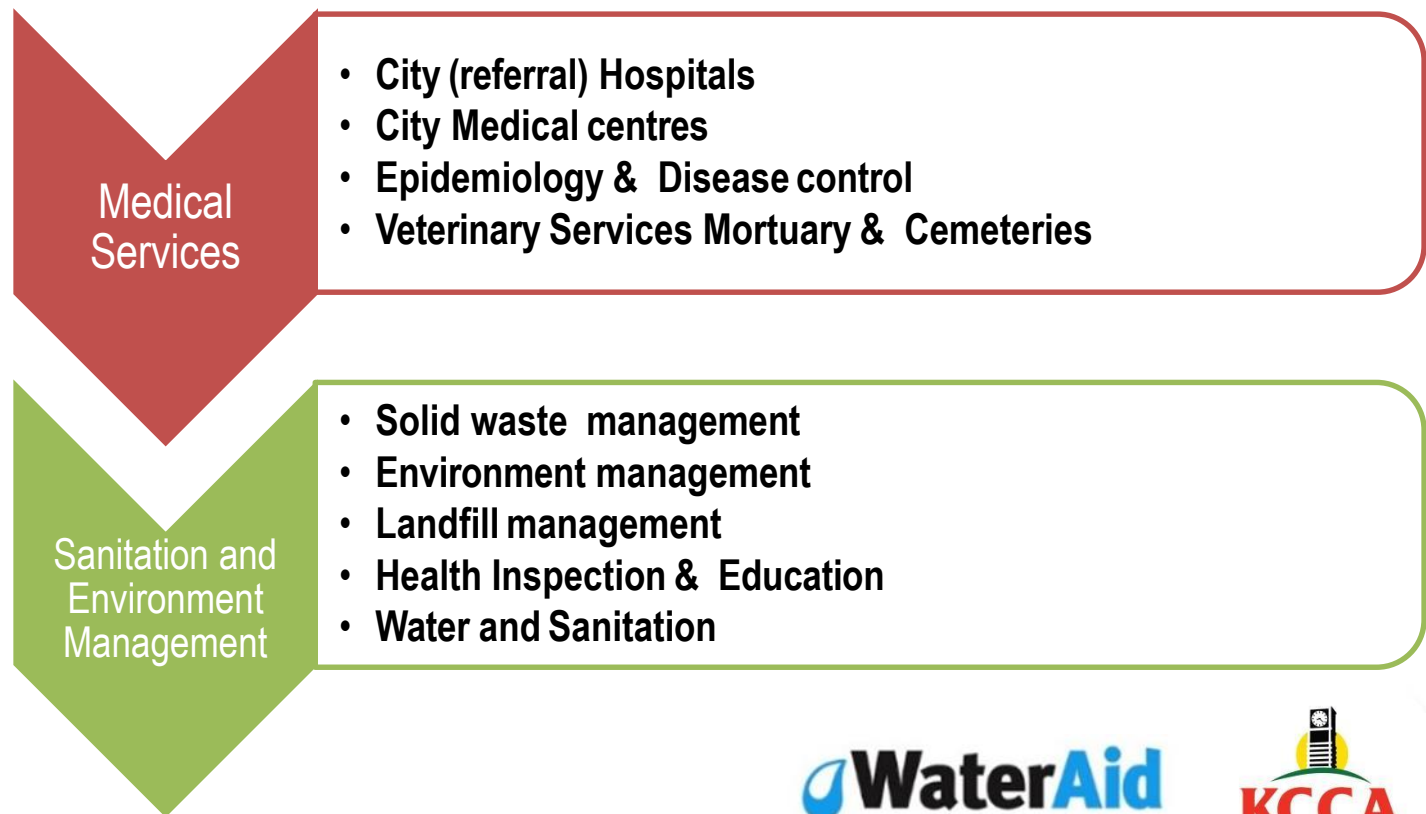


PUBLIC HEALTH STRATEGIC PLAN



MANDATE: To facilitate and provide equitable services to ensure a healthy population in a clean, habitable and sustainable environment

Core functions:



Priorities and focus areas 2019/2020-2026

- Sanitation and Environment



Integrated Solid Waste Management System

- Increase safely managed waste from 50% to 80% by 2025 through efficient collection, transport, disposal, treatment and resource recovery innovations

Citywide Inclusive Sanitation

- Increase safely managed FS to $\geq 80\%$ by 2025: Public sanitation infrastructure and services; Organized and regulated PS led emptying services; Promotion-regulation-incentivizing household sanitation; Equity-quality-efficiency, and innovativeness; Resource Recovery, Eliminate open defecation

Environmental Management and Pollution Control

- Establish a robust citywide environmental management coordination, regulation monitoring and pollution management system. Development control; Wastewater-Air-Noise-Pollution; Green spaces and ecosystem management

Public Health Inspection and Education

- Establish a responsive community based and public health surveillance and education system: Household hygiene and sanitation; Suitability of Institutional, Business and commercial premises; Medical examination; Occupational health and safety



SANITATION/FSM PROGRESS



Strengthening the Regulatory Framework and Enforcement



A. Kampala Sewerage and Faecal Sludge Management Ordinance



THE KAMPALA CAPITAL CITY AUTHORITY (SEWERAGE AND FAECAL SLUDGE MANAGEMENT) ORDINANCE

March 2018

Implemented by



- Passed by Political Authority
- Highlights of Ordinance
 - Sewer Connections
 - Licencing of emptiers
 - Minimum Standards
 - Faecal Sludge Transportation
 - Faecal Sludge Treatment, disposal and reuse
 - Penalties

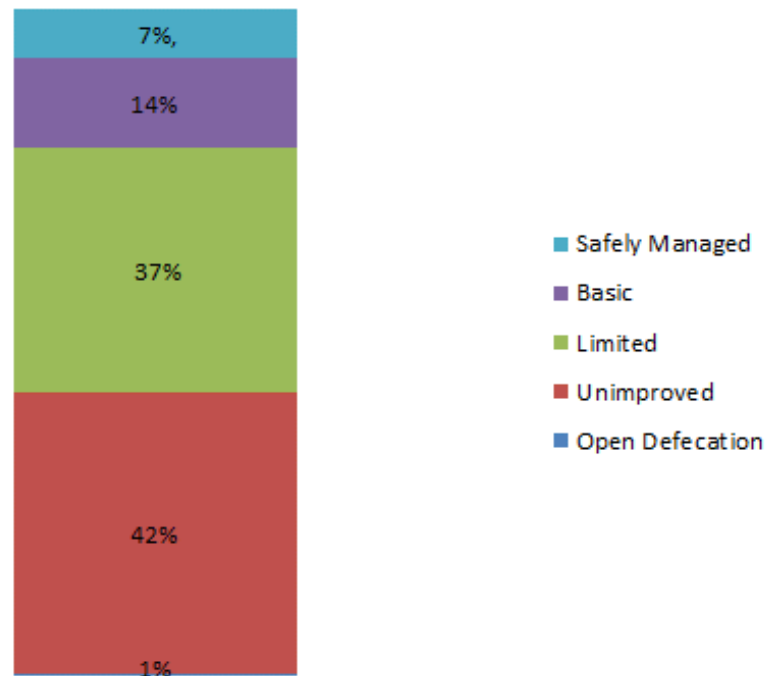


Strategic Plan- 2030



B. Kampala Sanitation Improvement and Financing Strategy

Citywide Sanitation Service Levels
(Population)



- To achieve 100% citywide coverage of improved sanitation
- Eliminate unimproved sanitation facilities and Open defecation
- Improve FSM
- Provide adequate Treatment capacity

Priority Areas

- Getting rid of Unimproved and ODF
- Consider GKMA



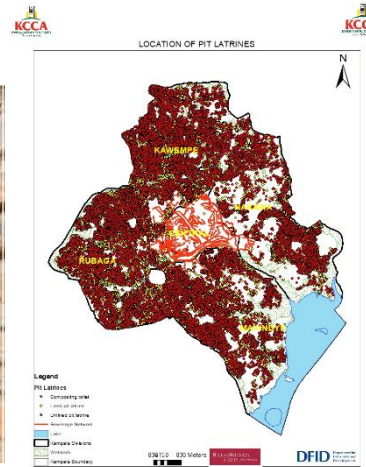
Implemented by



Sanitation Infrastructure Development



C. Household Sanitation



- Sanitation Database
- Minimum Standards for OSS
- Health Education, Awareness and Enforcement
- Promotion of Sanitation products (Sato, DuraSan)
- Pro-Poor interventions
- Financing options

Priority Areas

- Safely Managed Sanitation in Informal Settlements



Implemented by



Sanitation Infrastructure Development



D. School Sanitation



Implemented by



- Significant investment from KCCA and Partners
- 96 Facilities in the last 4 years
- Pupil : Stance Ratio @ 58:1 (from 118:1 in 2012)
- Technologies (Bio-toilets, WashAlot, Incinerators, Rainwater Harvesting)
- Software Measures (for O&M)

Priority Areas

- Standards (Waterborne)
- O&M



Sanitation Infrastructure Development

WEYONJE!
Build it. Use it. Empty it.

E. Public Sanitation



- Over 750 Public and Community Toilets
- Functionality rate - 91%
- Nr of Commercial / Public - 2,360
- Av. Footfall (KCCA) - 1,696/day



Priority Areas

- Increase number of public facilities ~ 200
- O&M Models



Sanitation Infrastructure Development



F. Sewer and Treatment Capacity



- Increase sewerage coverage – 30% by 2040
- Construct 2 new Treatment plants – Decentralized STPs
- and transfer stations
- Pilot Condominium sewers in Makindye and Kibuye
- Micro faecal sludge treatment units of 5 m³ /day in Kansanga and Namuwongo



Private Sector Development

G. Private Sector Participation

Process	Formalisation → Capacity Building → Legalisation → Service model definition				
Key Stages	Initial Engagement	MOU	Certification	Licensing	SLAs
Activities	<ul style="list-style-type: none"> Needs assessment Inventory Policy and regulatory framework Operational framework 	<ul style="list-style-type: none"> Define roles Operational standards Inclusive service delivery M&E 	<ul style="list-style-type: none"> Business development target training OHS Environmental and social safe guards Operational regulatory requirements 	<ul style="list-style-type: none"> Registration Business documentation Environmental and social safeguards Issue of license 	<ul style="list-style-type: none"> Setting operational territories SLAs Procurement Contract

- Business development
- Emptier Associations
- SLAs
- Regulation
- Health and Safety

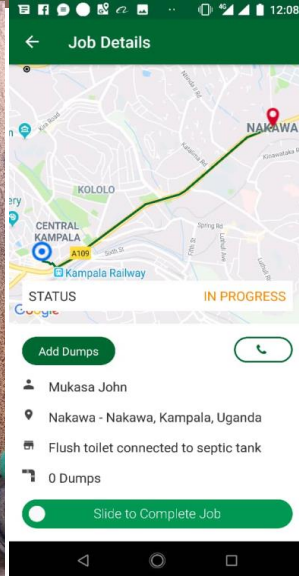
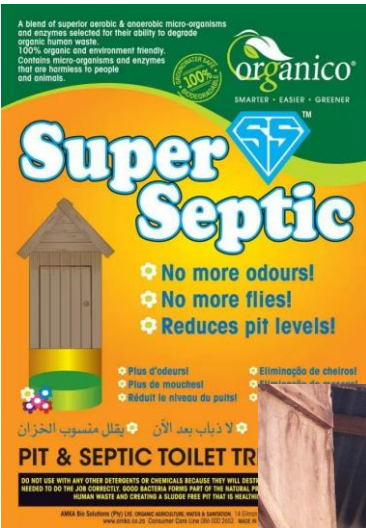


Private Sector Developments



H. Private Sector Promotion

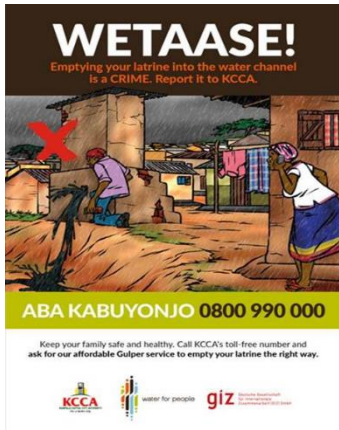
- Sanitation Marketing
- To not only include Emptiers but also;
 - builders / masons
 - Alternative technologies
 - product suppliers (sato pan, additives, e.t.c),
 - maintenance technicians / plumbers



Implemented by
giz Deutsche Gesellschaft für Internationale Zusammenarbeit (GIZ) GmbH



6. SANITATION MARKETING



Implemented by



Variety of approaches;

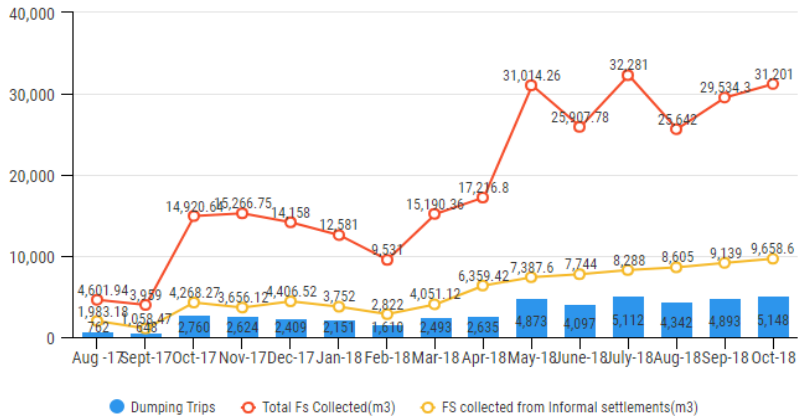
- Behavioral Change Communication
- Market Based
- Community based
- Leadership
- School based
- Technology use
- Media
- Software and Hardware



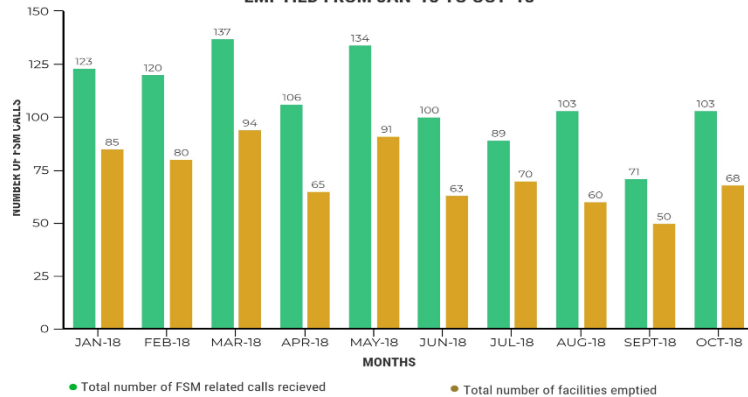
6. SANITATION MARKETING



Graph showing the trend of Dumping Trips and Fs collected



TOTAL NUMBER OF FSM RELATED CALLS RECEIVED Vs. TOTAL NUMBER OF FACILITIES EMPTIED FROM JAN-18 TO OCT-18



Strengthening Governance and Political Commitment

WEYONJE!
Build it. Use it. Empty it.



MEMORANDUM OF UNDERSTANDING (MoU) FOR THE NETWORK OF MAYORS OF KAMPALA CITY, WAKISO DISTRICT AND MUKONO MUNICIPALITY FOR WASH AND ENVIRONMENTAL INTEGRITY



WaterAid

Draft MoU

- Objectives;
 - Collaboration
 - Prioritizing WASH
 - Demand Creation
 - Participate in Policy Formulation
 - Joint implementation of programmes

Water and Environment JSR –September, 2019.



Strong Sector Coordination and Partnerships



National Sanitation Working Group
Kampala Water and Sanitation Forum
Kampala CWIS Advisory/Steering Committee

- ✓ Policy Direction
- ✓ Planning
- ✓ Technical Decisions
- ✓ Financing
- ✓ Investment Decisions



Draft MoU

- Objectives;
 - Collaboration
 - Prioritizing WASH
 - Demand Creation
 - Participate in Policy Formulation
 - Joint implementation of programmes



Implemented by





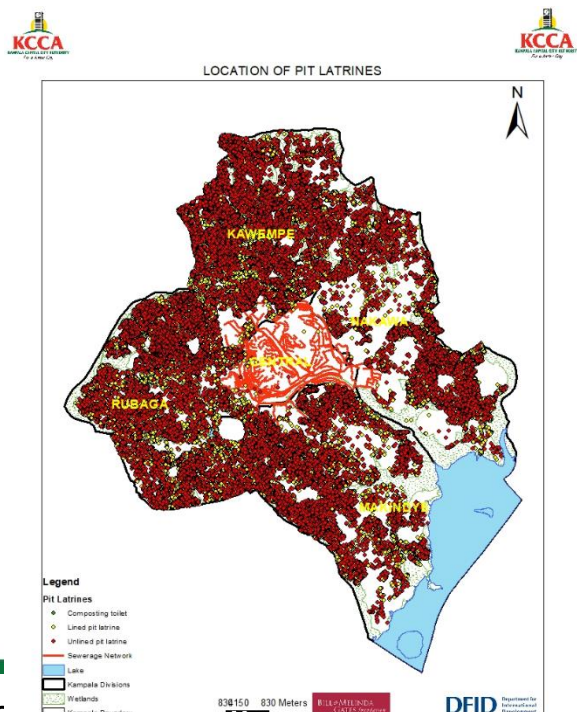
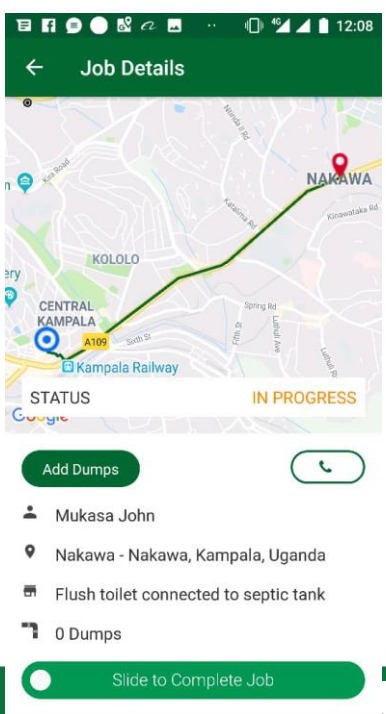
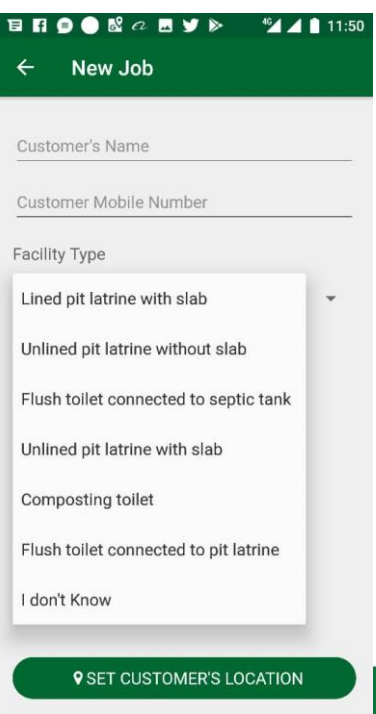
8. SANITATION INNOVATIONS



<http://172.16.1.55/ifms/>- call centre

<http://weyonje.com/login>- Back End

<https://gis.kcca.go.ug/portal/>- Sanitation Mash Up



KAMPALA CWIS PROGRAM



Program Components

4. Gender (Baseline Assessment, Mainstreaming)

5. Knowledge Management (Research, Innovation, Mentorship)

2. Informal Settlements (Toilets, Sanitation Marketing, Subsidies)

3. Legal Framework (Enforcement)

1. Citywide Services (Public Sanitation, Min Standards, Private Sector, Spatial Service Model)

Updates

- **Public Sanitation models in place**
- **Review of Minimum Standards – getting a Consultant**
- **Support to Private Sector – ongoing**
- **Sanitation Marketing – ongoing**
- **Which subsidy to use for urban poor?**
- **Gender baseline – near completion**
- **Mentorship of 10 municipalities**





THANK YOU