



Ministry of Water and Environment Joint Technical Review 2020

**Undertakings no.6:
Restore Degraded Hotspots within
the Refugee Hosting Micro-
catchments**

]

Detail of Undertaking no. 6

Overseeing Committee:

DEA, DWRM, DWD, UNHCR, UNDP, OPM, IP NGOs representative-LWF.

Establishment of Water Management Zones: start of catchment based approach to WRM

Albert Water Management Zone (AWMZ) : Fort Portal

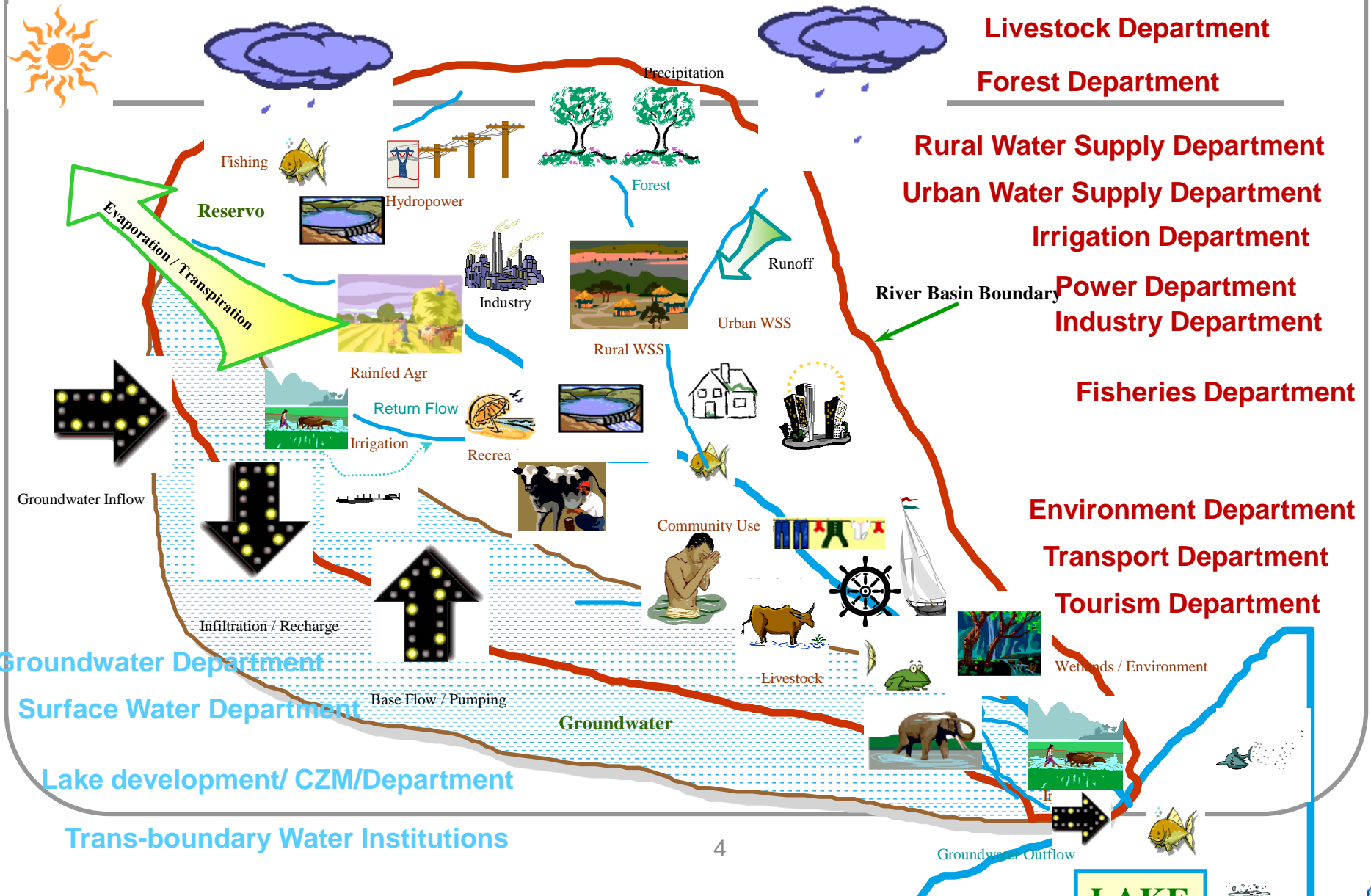
Kyoga Water Management Zone (KWMZ) : Mbale

Upper Nile Water Management Zone (UNWMZ) : Lira

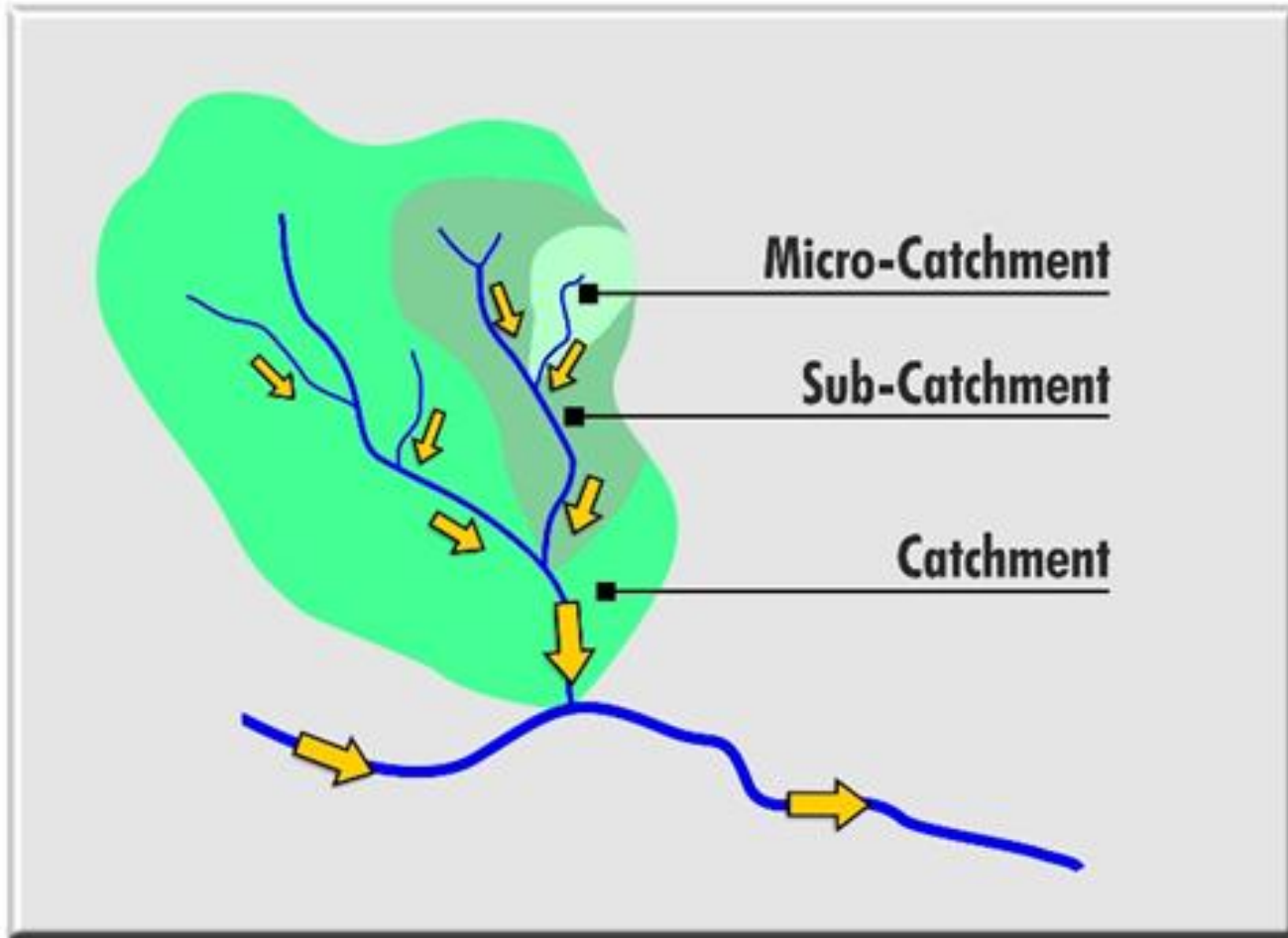
Victoria Water Management Zone (VWMZ) : Mbarara



NEED TO PLAN FOR USE AND MANAGEMENT OF WATER RESOURCES FOLLOWING A CATCHMENT



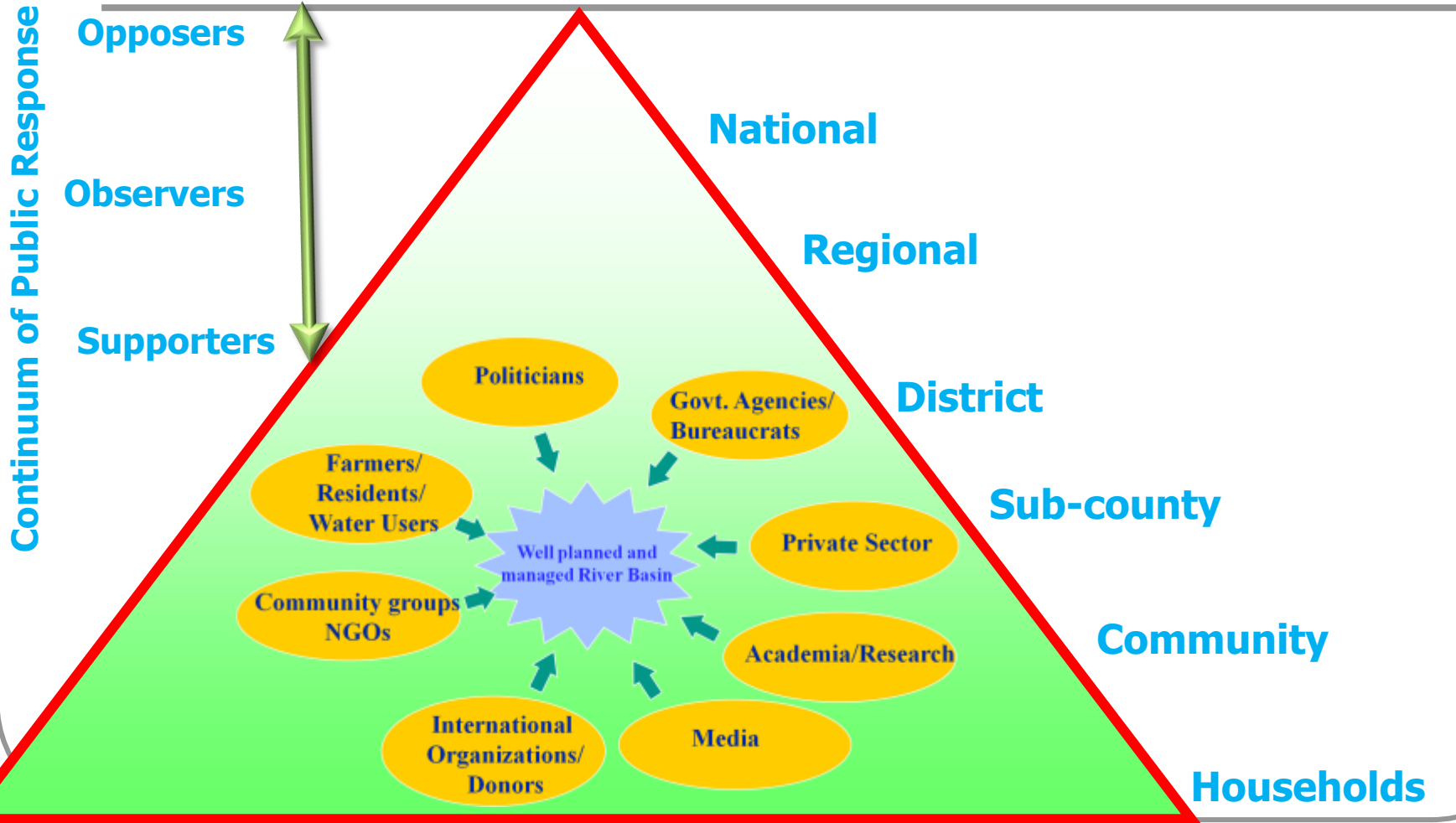
CATCHMENT/SUB CATCHMENT/MICRO CATCHMENT



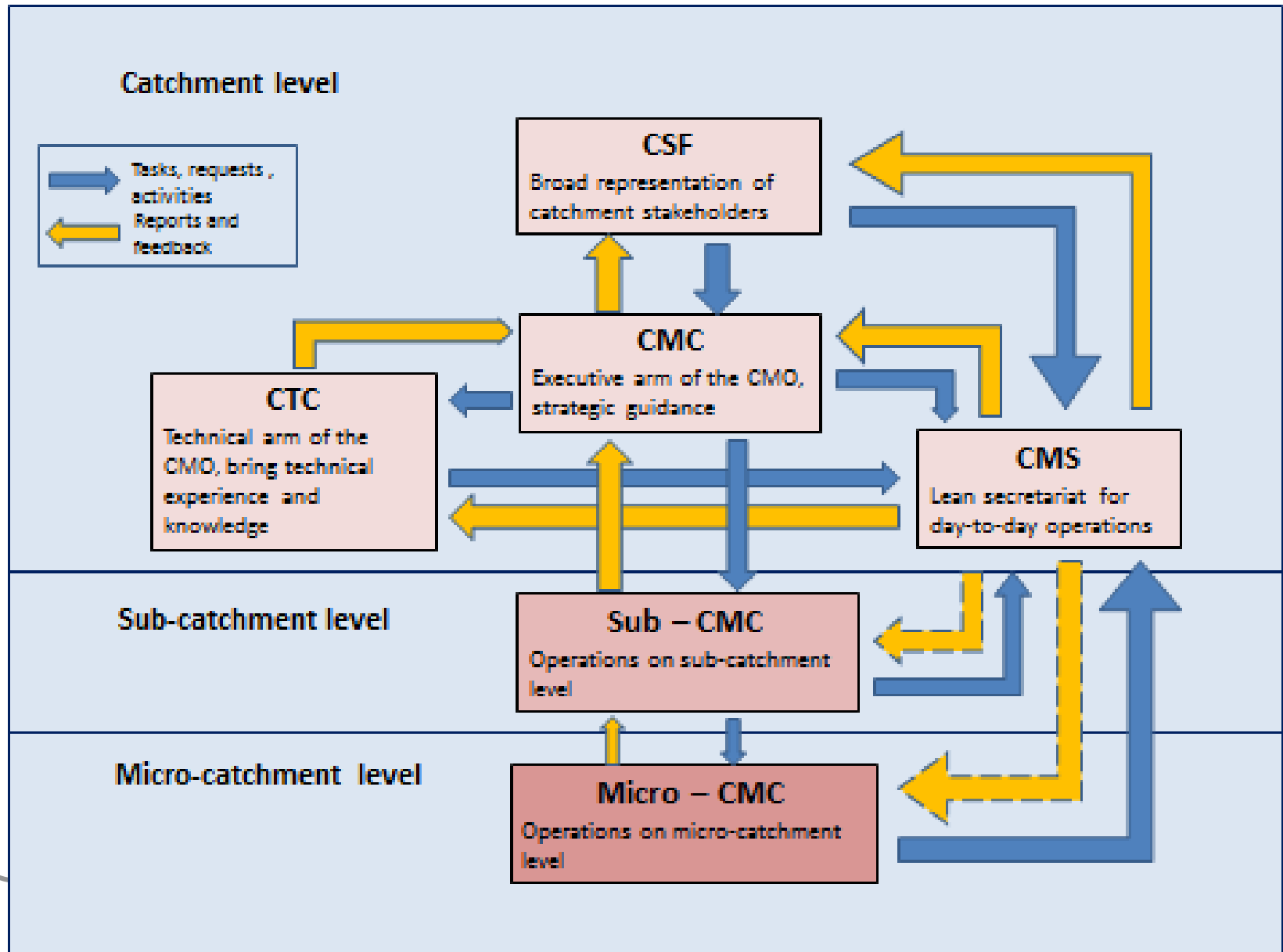
Why Micro Catchment Management Plans?

- Catchment Management Plans (CMPs) guide coordinated planning for water and related resources on a **wider scale**.
- Lower level Micro Catchment Management Plans **ensure adequate stakeholder's engagement and participation at lower level communities**.
- Micro Catchment Management Plans should be **aligned** with the CMPs
- Preparation of micro catchment management plans fosters experiences concerning coordination and implementation of WRM interventions.
Wetlands and Forestry Management Plans,

WATER RESOURCES STAKEHOLDERS ARE MANY...

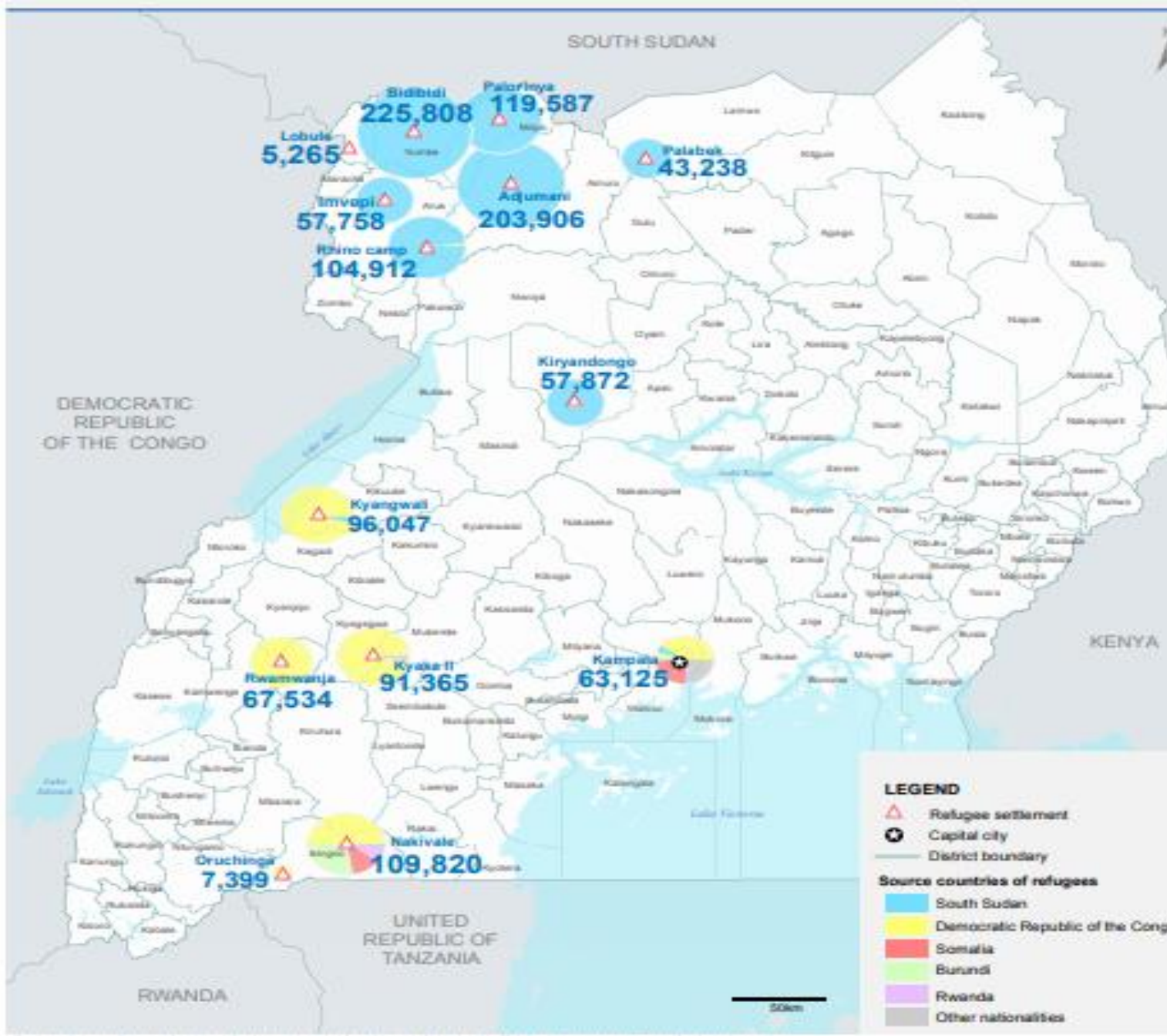


Catchment Management Organisations



Map showing location of refugee settlements.

About 1.3 million refugees reside in 13 settlements across 12 districts including Kampala

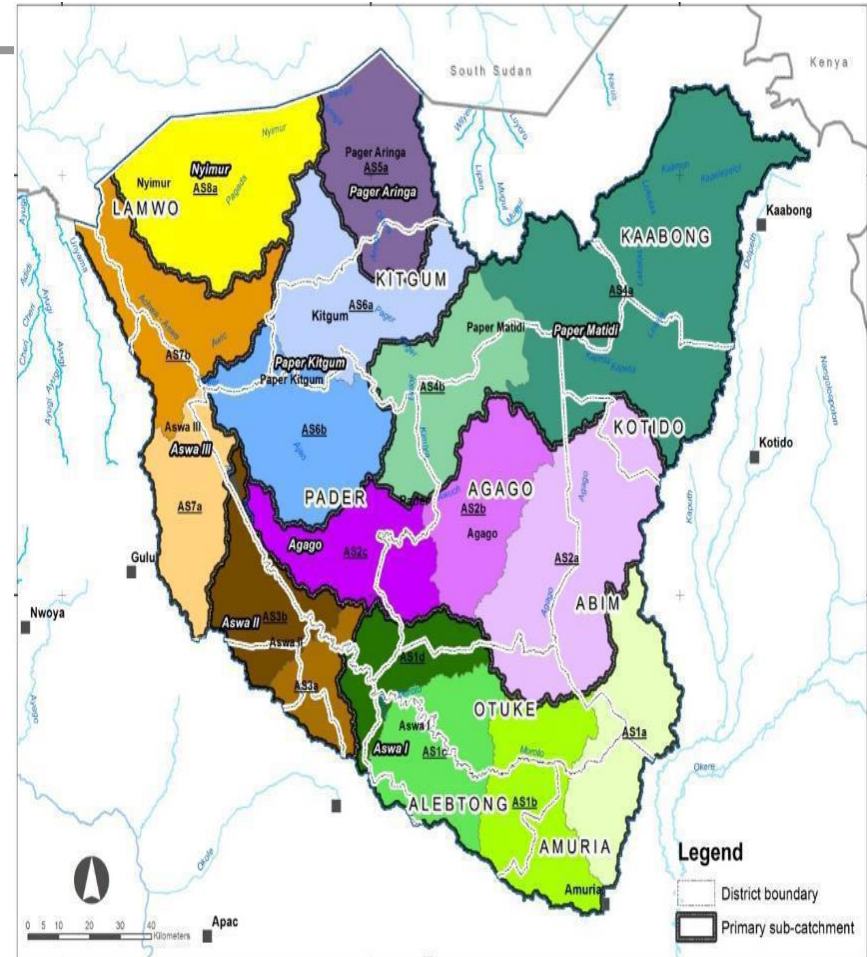
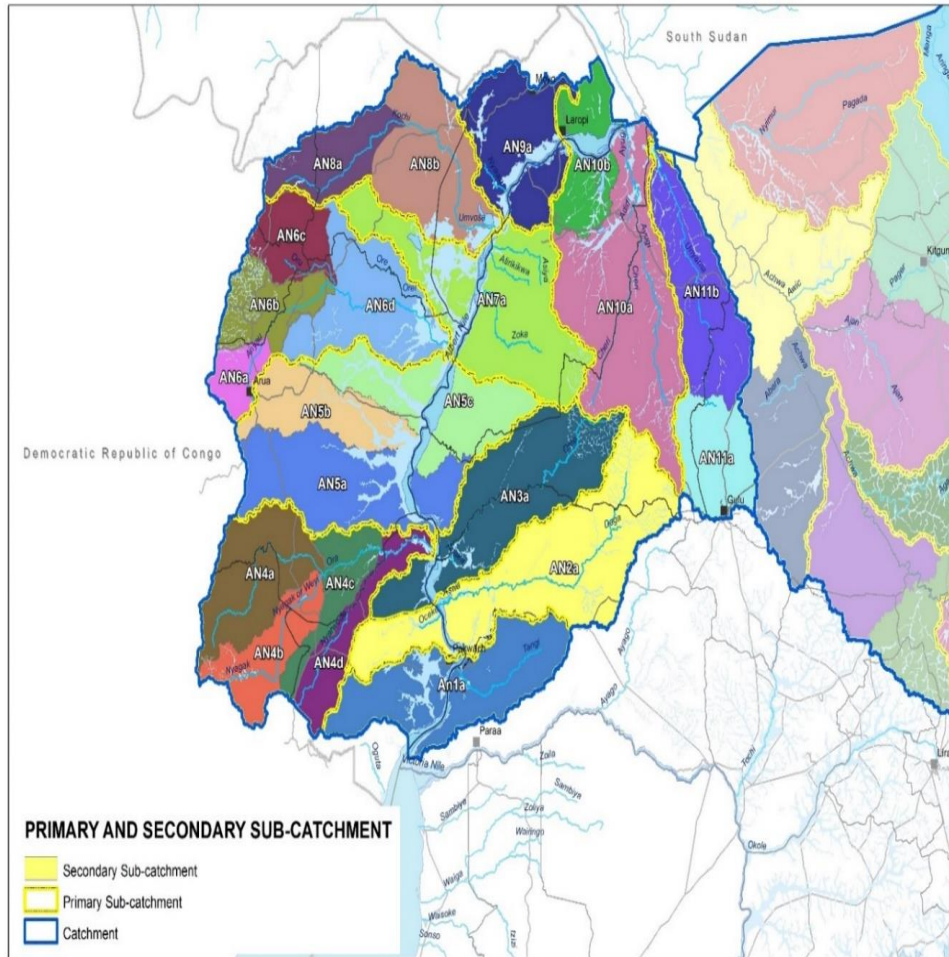


UNWMZ with major Catchments

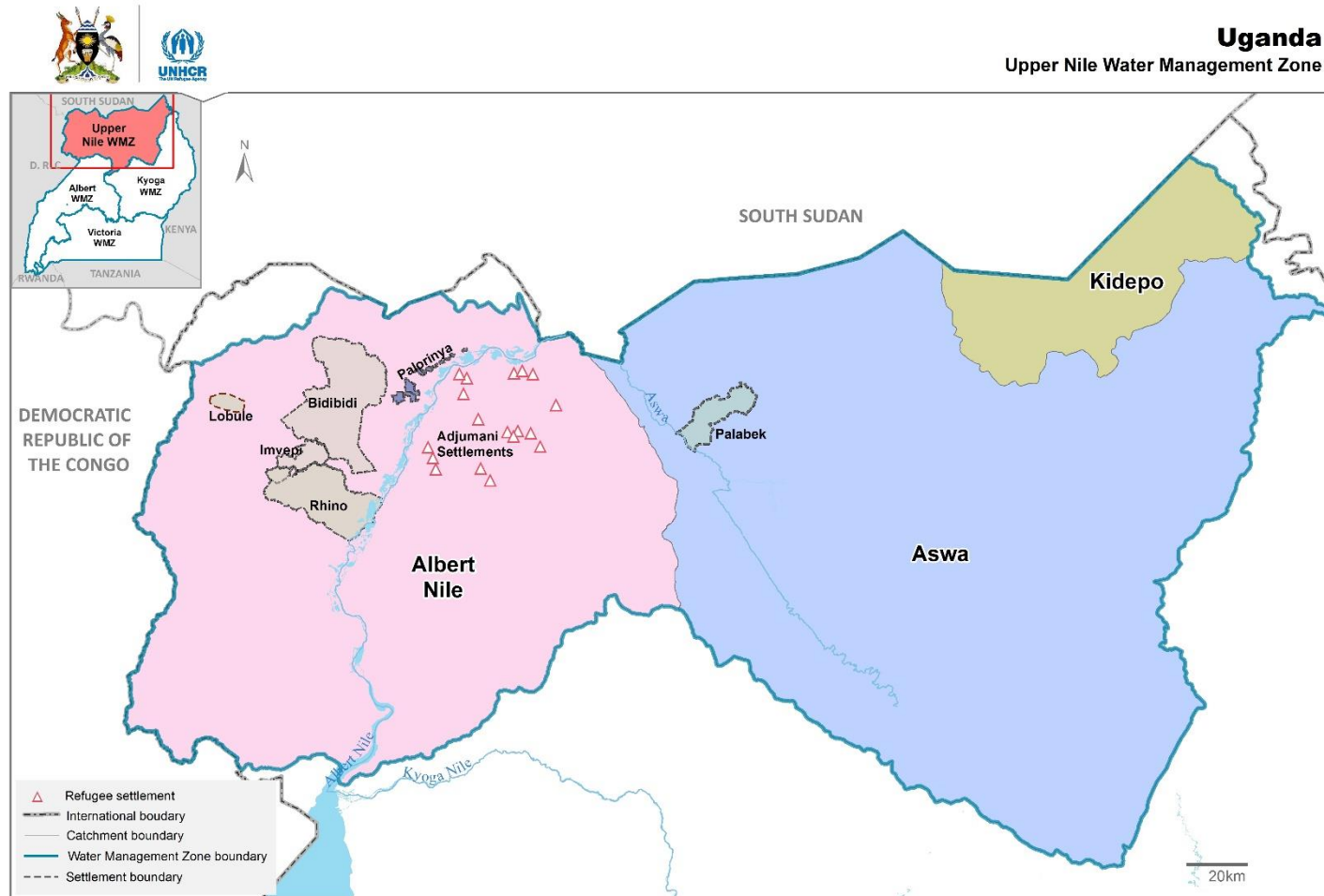
South Sudan



Sub-catchments in Upper Nile WMZ



Catchments and refugee settlements in Upper Nile WMZ



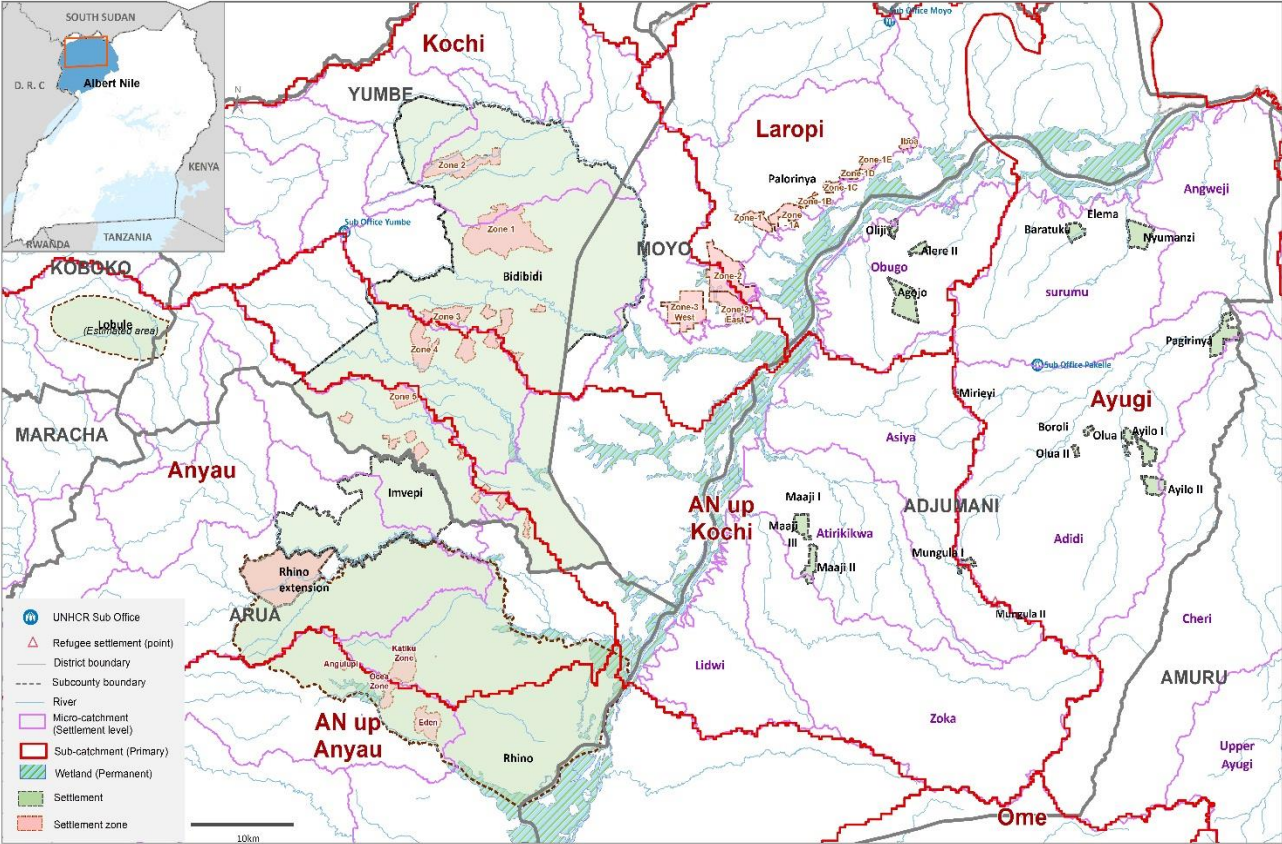
The boundaries and names shown and the designations used on this map do not imply official endorsement or acceptance by the United Nations.

Creation: 09 May 2018 Sources: UNHCR, UNCS, UBOS, MWE Feedback: IM Team Uganda (ugakaimug@unhcr.org) | UNHCR BO KAMPALA

Mapping of micro-catchments around refugee settlements



Uganda
Microcatchments of refugee settlements in Albert Nile basin
 as of 10 May 2018



The boundaries and names shown and the information used on this map do not imply official endorsement or acceptance by the United Nations.
 Creation: 09 May 2018. Sources: UNHCR, UNCS, UBOS, M/WE. Feedback: IM Team Uganda (jagkai.mug@unhcr.org) | UNHCR BO KAMPALA

Planned Actions and Progress

Planned Actions:

Overall 14 micro catchments have been mapped around refugee settlements. 6 Micro Catchment Management Plans are planned to be prepared this year

- *Prepare and implement 6 micro Catchment Management Plans.*
- *Identify the hotspots areas from the Micro Catchment Management Plans*
- *Restore identified degraded hotspots in the micro catchments.*
- *Constitute and operationalize Micro Catchment Management structures.*
- *Develop community agreements/bylaws on natural resources management.*
- *Produce and disseminate Micro Catchment Plans*
- *Document and disseminate lessons and best practices from restoration activities.*

Planned Actions and Progress

Progress:

- *3 Micro Catchment Management Plans prepared ([under NURI Project](#)). This include Yelulu (Arua), Ora (Zombo) and Nyarwodho (Nebbi) micro catchments.*
- *Degraded hotspots from the 3 Micro Catchment Management Plans identified.*
- *Restoration of degraded hotspots in the 3 Micro Catchment Management Plans initiated ([under NURI Project](#))*
- *Micro Catchment Stakeholders Forum (CSF) established waiting election of Micro Catchment Management Committee.*
- *Formulation of community bylaws on natural resources management is ongoing*
- *Preparation of 5 Micro Catchment Management Plans initiated ([under NURI Project](#)). This include Ogowapoke(Kitgum), Nyivura (Adjumani), Iboa (Moyo/Obongi) and Abongo (Packwach) microcatchments*
- *Procurement of consultants for preparation of 6 Micro Catchment Management Plans is ongoing ([under World Bank](#))*

Planned Actions and progress

S/n	Location of restoration	Definition of intervention	Acreage restored(ha)	Remarks
1	Moyo-Host communities for Palorinya settlements	Afforestation	6.1	Largely targeting provision of fuel wood
2	Moyo-Restoration in CFRs	Afforestation	271	Largely restoration with bamboo
3	UNHCR-REFOREST Project(Moyo, Yumbe, Kyegegwa, Arua, Kiryandongo, Kikuube, Koboko, Lamwo,	Afforestation/Enrichment planting		With support from UNHCR-REFOREST Project
4	Kiryandongo	Afforestation & Enrichment planting	244	OPM/DR.DIP,Kiryandongo DLG((Nyakatiti watershed in Kigumba sub county, Kinyomozi watershed in Kiryandongo sub county , Kyabatikire watershed in Bweyale subcounty and Panyadoli watershed in Mutunda subcounty
5	Kyegegwa	Afforestation and enrichment planting	259	Partly(33%) in restoration of Rwensanbya CFR and the rest to support households in the sub counties of Mpara, Kakabara, Kyegegwa and Rwentuha
6	Arua	Afforestation and enrichment planting	100	In 5 LFRs(Giligili, Kaluva, Nyio Bamboo, Odruwa and Mbaraka) as well as in the sub counties of
7	Adjumani	Afforestation and enrichment planting	89.7	Mainly restoration with Fruit trees(Psidium guajava, Citrus tangerina, Carica papaya and Artocarpus heterophyllus), Pines, Clonal eucalypts, Tectona grandis, and Melia volkensii in the 9 sub projects

Planned Actions and progress

S/n	Location of restoration	Definition of intervention	Acreage restored(ha)	Remarks
8	Koboko	Afforestation and enrichment planting	???	Yet to receive reports
9	Yumbe	Afforestation and enrichment planting	336ha	Largely Gmelina arborea and Tectona grandis planted, with support from UNHCR and DanChurch Aid
10	Kamwenge	Afforestation and enrichment planting	???	Support from UNHCR
11	Lamwo	Afforestation and enrichment planting	???	Support from UNHCR
12	Isingiro	Afforestation and enrichment planting	???	Support from UNHCR
13	Kikuube	Afforestation and enrichment planting	168	With support from UNHCR and Chimpazee Wildlife Conservation Trust
	Total		1478.8	

Related Activities / Processes

- Support from FAO to prepare Micro Catchment Management Plans in the cattle corridor and West Nile regions.
- Building capacity of FAO implementing Partners in Catchment IWRM
- Implementation of priority WRM measures in Aswa II sub-catchment and Kochi sub-catchments.
- Water and Environment Sector Response Plan for Refugee and Host Communities launched.
- Forestry Landscape Restoration Opportunities Assessment Framework
- Forestry 40 Million tree campaign

Key Challenges

- Impact of Covid-19 virus which limited stakeholder interactions (Processes are largely stakeholder driven)
- Limited Capacity in IWRM among various stakeholders
- Limited awareness of CbIWRM

Next Steps

- *Atleast 3 more micro Catchment Management Plans prepared.*

- *Upscaling of restoration of degraded hotspots in refugee hosting micro catchments as part of implementation of priority measures .*
- *Finalize constitution and operationalization of Micro Catchment Management Committees.*
- *Finalise formulation of community bylaws on natural resources management.*
- *Capacity building of various stakeholder groupings.*
- *Produce and disseminate Micro Catchment Plans*
- *Documentate and disseminate lessons and best practices from project activities*
- *Emphasis on Pig riding on on-going projects and programmes*
Resource mobilisation

END

●
● *THANK YOU*