



Supported by:



The Water Security Action And Investment Plan (WSAIP)

Collective Action for a Water Secure Greater Kampala

26th September 2019

Mathew Parr

Country Coordinator

International Water Stewardship Programme

Why leaders put water high on the agenda?

The Economics of Water



Water [security] crisis ranks among the Top 5 Global Risks identified by the World Economic Forum every year since 2012.

(World Economic Forum: Global Risks Report 2017)



“With water in short supply, there will be changes in what is produced, where it is produced, and the efficiency of production and water use. So, even local changes can be transmitted across the globe.”

„Improved water stewardship thus pays high economic dividends.”

(World Bank Group: High and Dry, 2016)

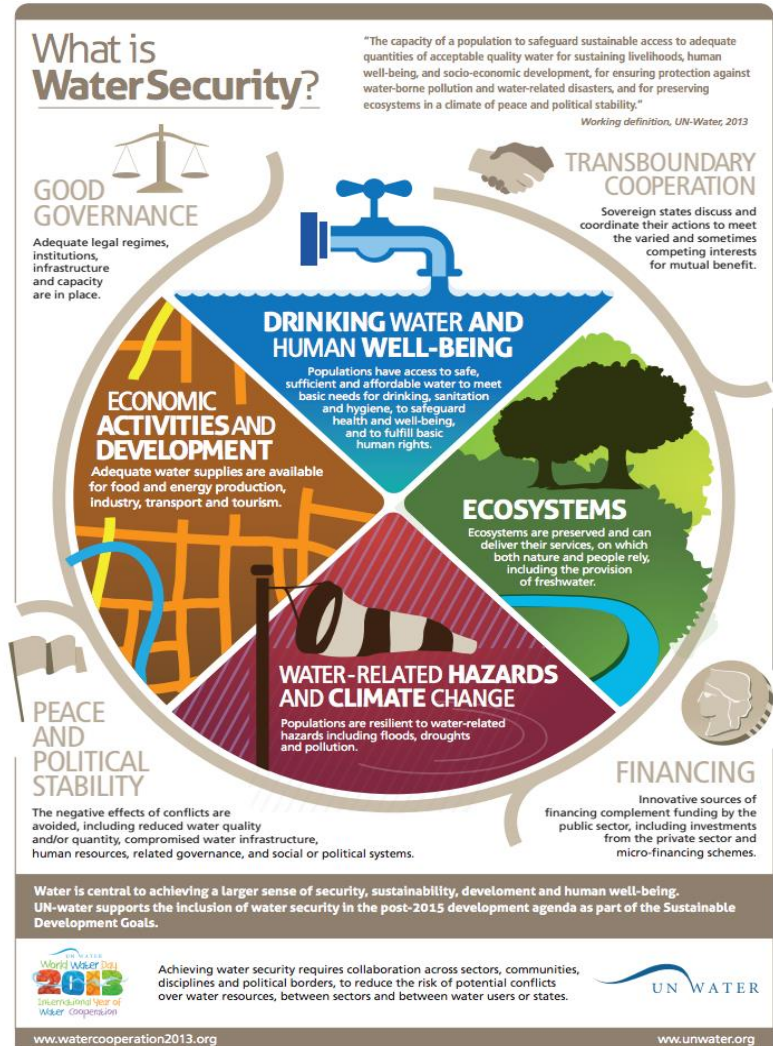


Supported by:



The UN defines Water Security as

The capacity of a population to sustainable access to **adequate quantities of acceptable quality water** for sustaining **livelihoods, human well-being, and socio-economic development**, for ensuring protection against **water-borne pollution and water-related disasters**, and for **preserving ecosystems** in a climate of **peace and political stability**



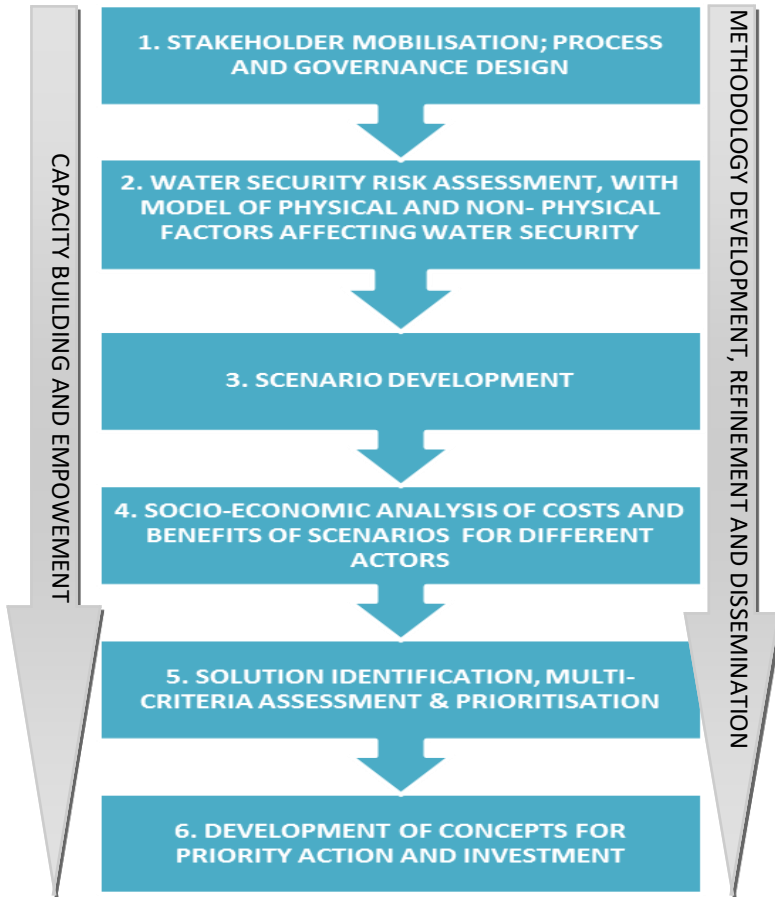


Supported by:

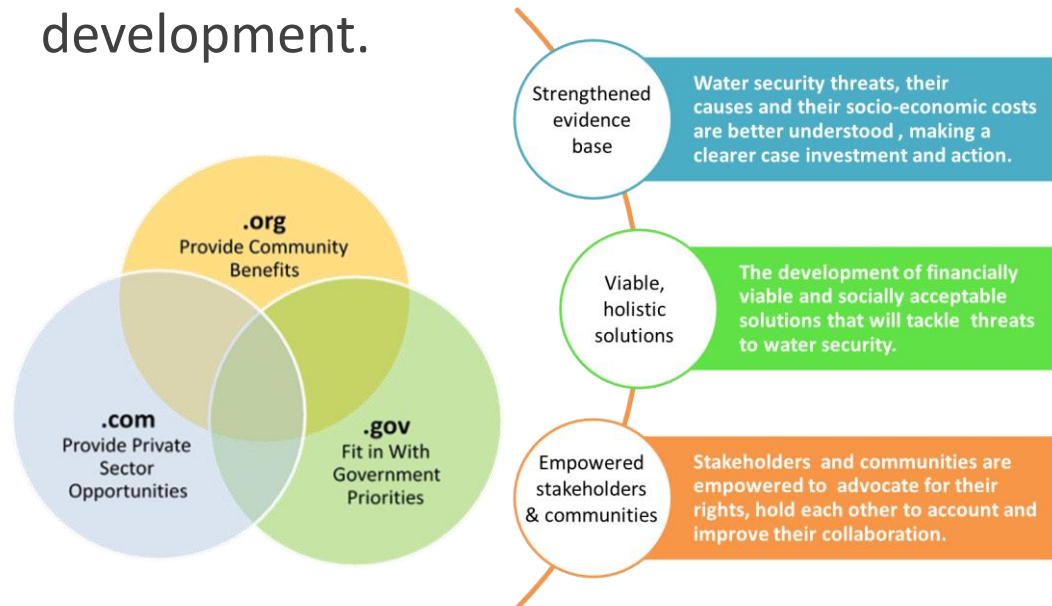


Conceptual Framework

How can we address the challenge in Greater Kampala?



The WSAIP is an **integrated water security action and investment plan** in the Greater Kampala Metropolitan Area (GKMA) to support sustainable social and economic development.



Strong Evidence Base, X20 Prioritised Projects, and Empowered Stakeholders



The Challenge: Water Insecurity in Greater Kampala Metropolitan

PRESSURE	ENVIRONM. PRES. SCARCITY	ENVIRONM. PRES. FLOODING	SOCIO-ECONOMICAL PRESSURES	
	Annual precipitation and variability	Rainfall intensity & variability	City population	Domestic water use
		Storm surge hazard		Population growth
	Freshwater scarcity around city	Tsunami hazard*	GDP (PPP)	Water-intensive industries
		Expected SLR by 2100*	Slums	Condition upstream watershed
Area below SL & subsidence*				

STATE	WATER QUANTITY	WATER SUPPLY INFRA	FLOOD PROT. INFRA	SANITATION INFRA	WATER QUALITY
	Supply continuity reservoirs & lakes	Coverage and leakages of water supply system	Coastal flood prot. infra.*	Coverage and leakage of sewer system	Surface water quality
	Dependency overexploited aquifers		River flood protection infrastructure		Polluted sediments
	Local groundw. drawdown	Continuity and quality of water supply	Stormwater drainage infrastructure	Adequacy wastewater treatment	Garbage in water
				Groundwater quality	
				Salt water intrusion*	

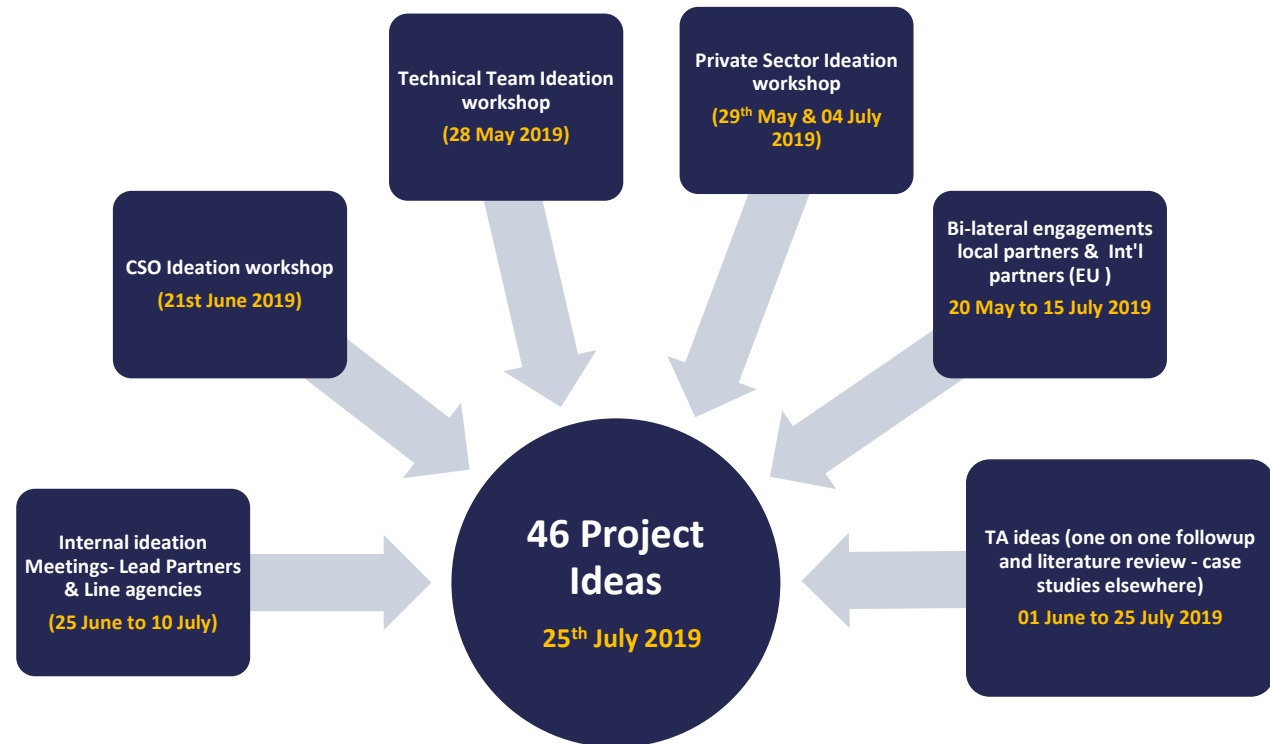
IMPACT	DEPENDENCIES	WATER SUPPLY	FLOODING	SANITATION	ECOLOGY	AESTHETIC
	Conflicts over water supply	People with adequate water supply	Coastal flooding*	People with adequate sanitation	Ecological quality of urban water	Water image of city
	Sustainability of urban water footprint		River flooding	Water-associated diseases		
Stormwater flooding						

RESPONSE	INSTITUTIONAL FRAMEWORK	PLANNING	OPERATIONAL MANAGEMENT
	Clarity of roles and responsibilities	Access to data and information	Effectiveness water supply m'ment
	Horizontal coordination	Financial resources	Effectiveness sanitation m'ment
	Vertical coordination	Effectiveness disaster management	Effectiveness flood protection m'ment
	Corruption	Adequacy strategic planning	Effectiveness environmental and ecological m'ment
Accountability	Degree of public participation		

Collective Investment Actions

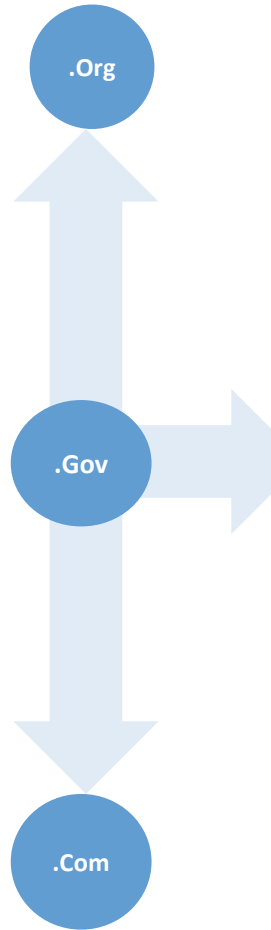
Four Thematic Areas

- Land Use, catchments and ecosystems
- Water supply and sanitation
- Solid waste management
- Effluent management





Collective Project Selection Criteria



Criteria	Ideation Sessions Weights						Interim I Weights
	CSO	MWE	KCCA	UMA	NWSC	Overall	
Environmental Quality Improvement	37%	32%	27%	32%	40%	33%	32%
Socio-economic Benefits Provision	16%	23%	25%	28%	15%	22%	36%
Public Health Improvement	19%	25%	37%	21%	23%	25%	12%
Program Characteristics	28%	20%	12%	20%	22%	20%	19%



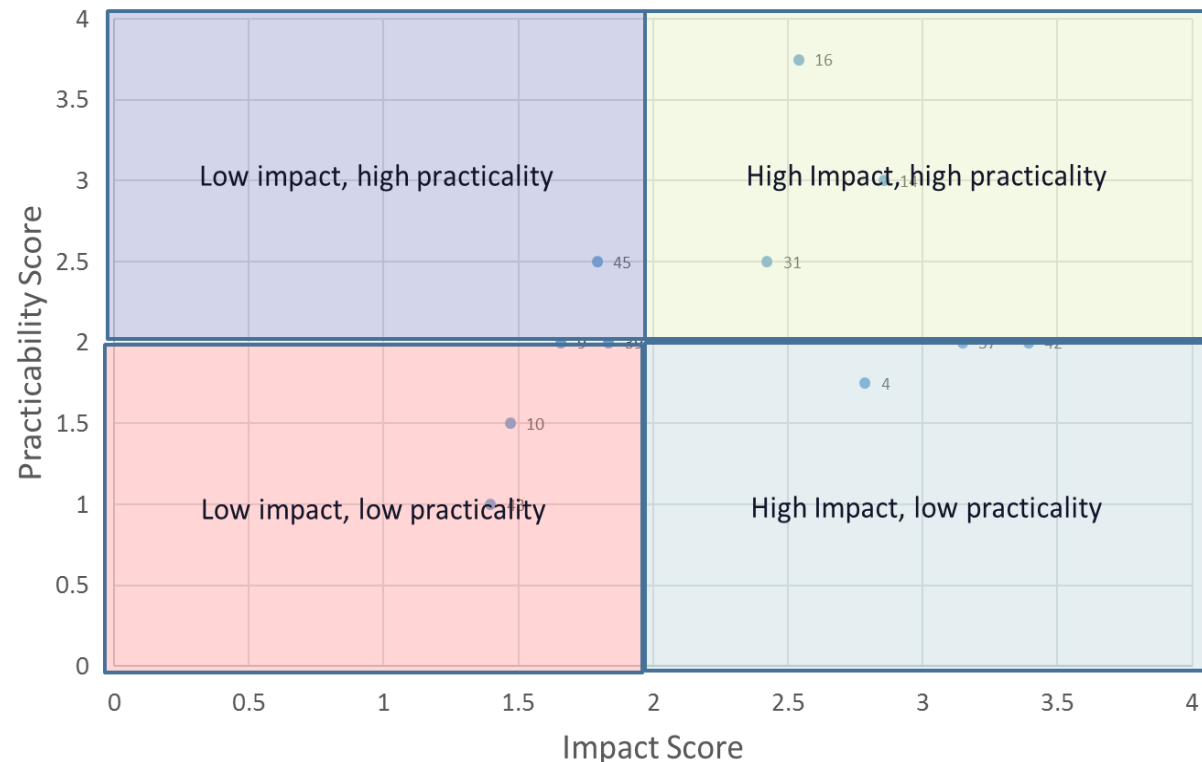
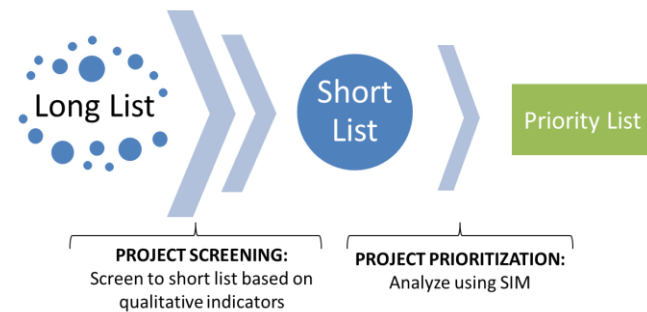
Collective Project Screening Scores



Project Title	Group I	Group II	Mean Scores
Expansion of sewer network connections	4	3	3.5
Leveraging Public Private Partnerships for Faecal Sludge Management in Municipal Towns and Cities.	4	3.5	3.75
Industrial/Enterprise Water Demand Management Programme	2.5	3.5	3
Greening Urban Open Spaces (Integrating landscaping into build environment)	3	3.2	3.1
Integrated Urban Catchment Management Planning for Greater Kampala (Lake Victoria Sub Catchments)	3.5	3.5	3.5

Ongoing: Selection and Prioritisation of Investment Actions

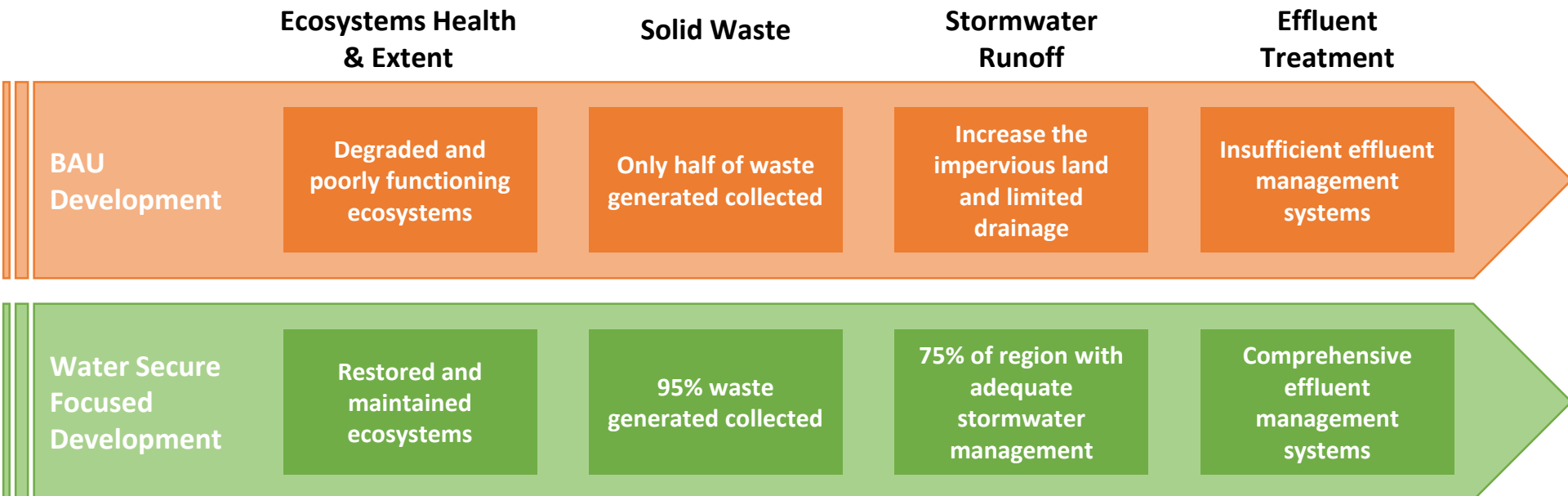
- **Stage I** – Screening through Multi-criteria analysis (Qualitative approach)
- **Stage II** – Prioritization using WSIM Model (Quantitative approach)





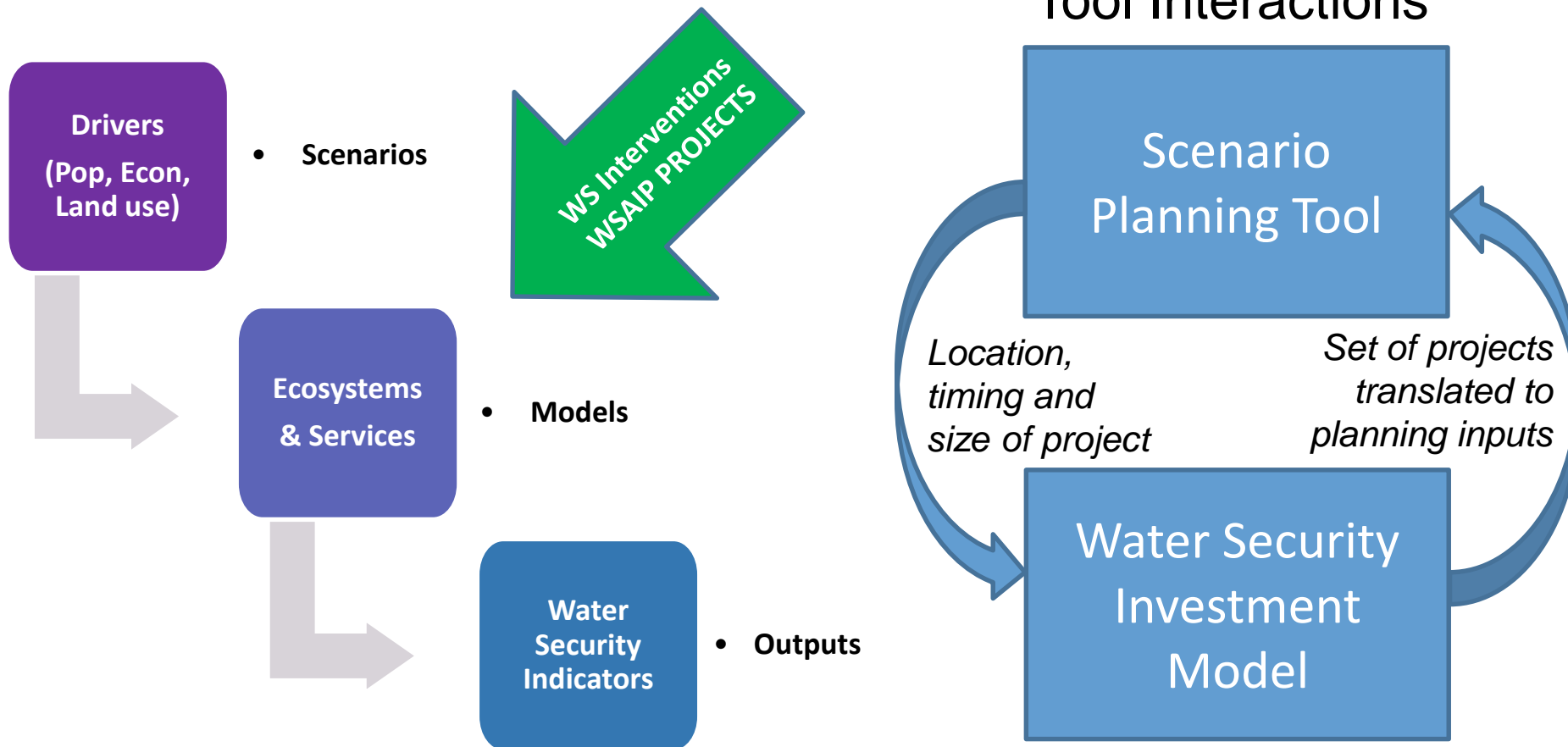
Ongoing: Integrated assessments – Case for Investment

- **Situation analysis** – Hotspot identification & baseline for analysis
- **Economic analysis** – Benefits assessment to build a case for investment.





Ongoing: Scenario Building – Stakeholder Values and Priorities





Supported by:



The Water Security Action and Investment Plan

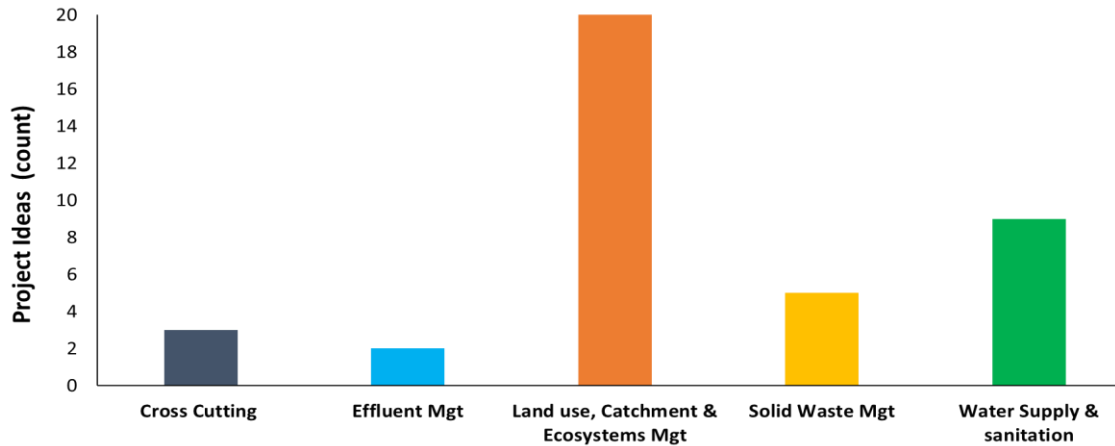
Breaking Down Silos: Collective Action for a Water Secure Greater Kampala

Thank You

Mathew Parr GIZ
Country Coordinator
IWASP
mathew.parr@giz.de

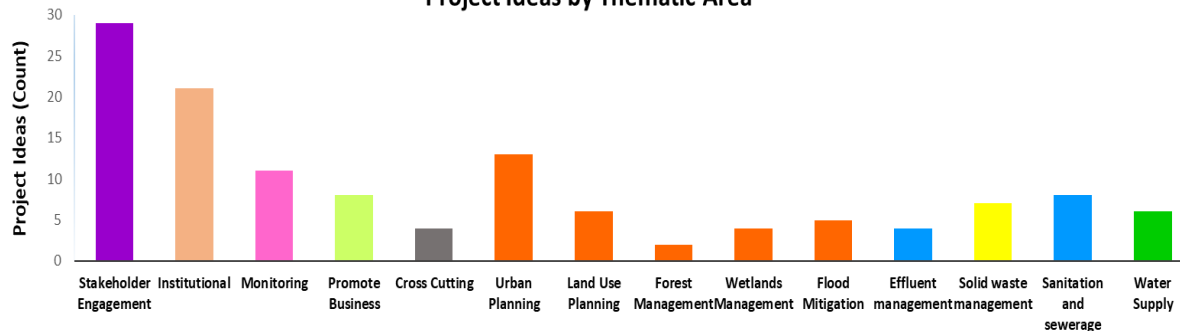
Post Ideation: Review & Validation of Long List

Project Ideas by Thematic Area

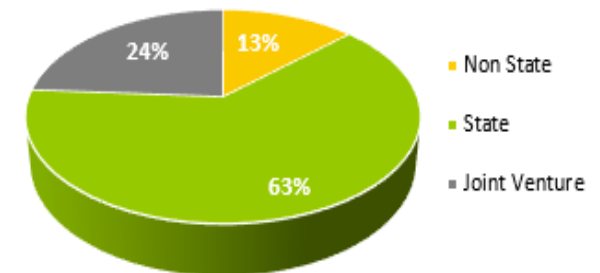


- **Non state actors: CSOs & Private Sector**
- 02 – CSO led project ideas
- 04 – Pure Private sector led
- 11 – Public Private/Joint Ventures
- 29 – Government Led

Project Ideas by Thematic Area



Proportion of Project Ideas by Actors



The Approach – Stewardship through Partnerships

