

STATUS OF FORESTRY IN UGANDA

PRESENTED AT THE MWE JTR-MASAKA

12th April 2018

BY

John Diisi

National Forestry Authority

Introduction

- Vision 2040 – restore forest cover from 15% to 24%, NDP II to restore to 20% by 2020
- Forests are important in the water cycle, are indispensable partner for agriculture, a back bone of Uganda's economy
- Over 95% of people in Ugandans depend on biomass energy. Firewood = 40m tonnes, Charcoal = 1m tonnes p.a
- 500,000m³ of wood consumed as sawn timber- 2 million m³ round wood
- Electricity is still too expensive, mostly restricted to lighting for most users. Cooking and boiling remains dependant on wood

Management of Central Forest Reserves

- **Length of CFRs boundary resurveyed and marked with concrete pillars:** 225Km out of 500km were achieved in the Mabira complex (Nandagi, Namakupa, Namawanyi and Namananga) supported by World Bank.
- 394.2 km in other forest Reserves- Omier, Kadam, Mbale, Kijwiga, Navugulu, Luwero, Kijwiga-Kiboga...
- **Length of CFRs boundary Maintained:** 12Km in Luwafu and Omier (2) CFRs were maintained
- **Area of CFR freed of encroachment:** 2,381.5 ha out of 13,400ha were freed from encroachment to-date in Lakeshore, Kyoga, Karamoja and Muzizi.
- (Westnile-1,351, Karamoja-15 Budongo-33ha and Lakeshore-27)

Establishment of new tree Plantations

- 162.5ha out of 861.1ha were achieved as new plantations established in Mafuga (Kirima), Mbarara (Bugamba and Rwoho), Seed stands (Kagorra-8) Budongo (Nyakunyu, Sirisiri, Kisindi, Katanga, Siiba, Kabalye and at Range office)

Plantation maintenance

- 555.3ha out of 7,256ha of plantations were achieved,
- 63ha thinned. 2nd thinning-63ha (seed stands, South Busoga-63). 7 pruned in Kyoga Range-Nile Bank.
- 88.5Km firebreaks maintained by scrapping during the dry season (fire season)
- Forest Roads maintenance: 5Km out of 150Km of forest roads were maintained in South Busoga
- Km of firebreak made and maintained in plantations: 29 km out of 602km of firebreaks were achieved in Mbarara, South Busoga and in North Rwenzori

Supply of Tree Seeds & Seedlings

- Number of tree seeds procured/produced for sale and internal use, 481Kg supplied to NFA nurseries and 128.05Kg sold to private nurseries.
- 151.85Kg out 5,180kg targeted were distributed under the community tree planting.
- Total seed sales and distribution for internal use were 609.05Kg

No. of seedlings produced for sale

- **2,030,348** seedlings out of **8,623, 550** targeted were produced for sale
- **3,084,131 seedlings out of 21,375,000 targeted** were produced under the Community Tree Planting Programme

Supply of forest and non-forest products and services

1. 182 licenses issued for various activities in CFRs. They include licenses for harvesting on private plantations in CFRs, Tree farming, and research in various CFRs
2. **Timber Harvested: 3,083.64m³** of round wood harvested from, South Busoga, Mwenge, North Rwenzori and Opit
3. **Firewood sold: 543 m³** of firewood harvested from Mafuga, South Busoga, Mbarara, Kyoga, Lendu, West Nile and Mwenge
4. Number of construction poles from W/Nile-132, Lendu-300, 61 tonnes of stones were extracted from Kyahaiguru
5. **Ecotourism:** National Forestry Authority manages four Ecotourism sites: 27,169 tourists were received in all centres of Mpanga, Mabira, Budongo & Kalinzu. Activities were chimpanzee tracking & habituation, birding & guided forest/nature walks

Law enforcement and governance

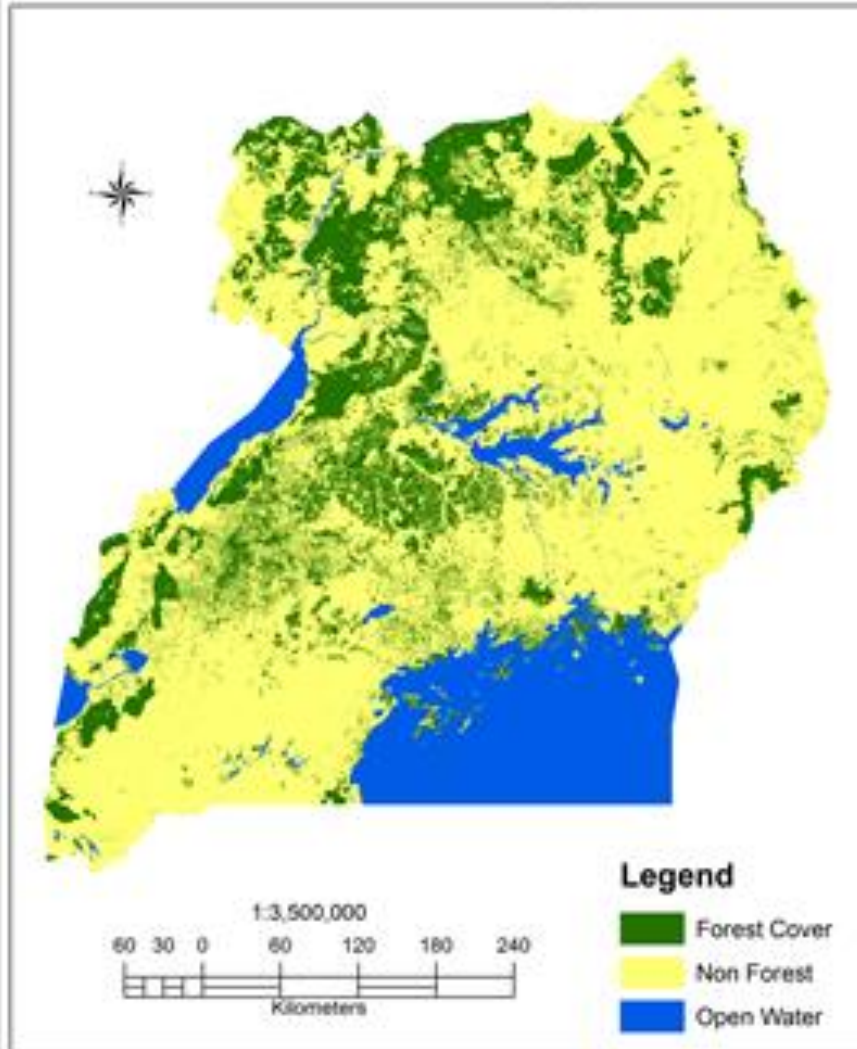
- 19,322 patrols were conducted across all management areas.
- 5,287.8 m³ timber impounded from 386 people involved in illegal activities and were arrested, 61 were charged in court,
- 292 charcoal bags were confiscated, 687 Charcoal Kilns destroyed.
- 489 assorted tools were confiscated, 83 cases were reported to police,
- 751 people were evicted and 1,802ha were freed from encroachment
- 61 illegal titles recorded.

Law enforcement and governance

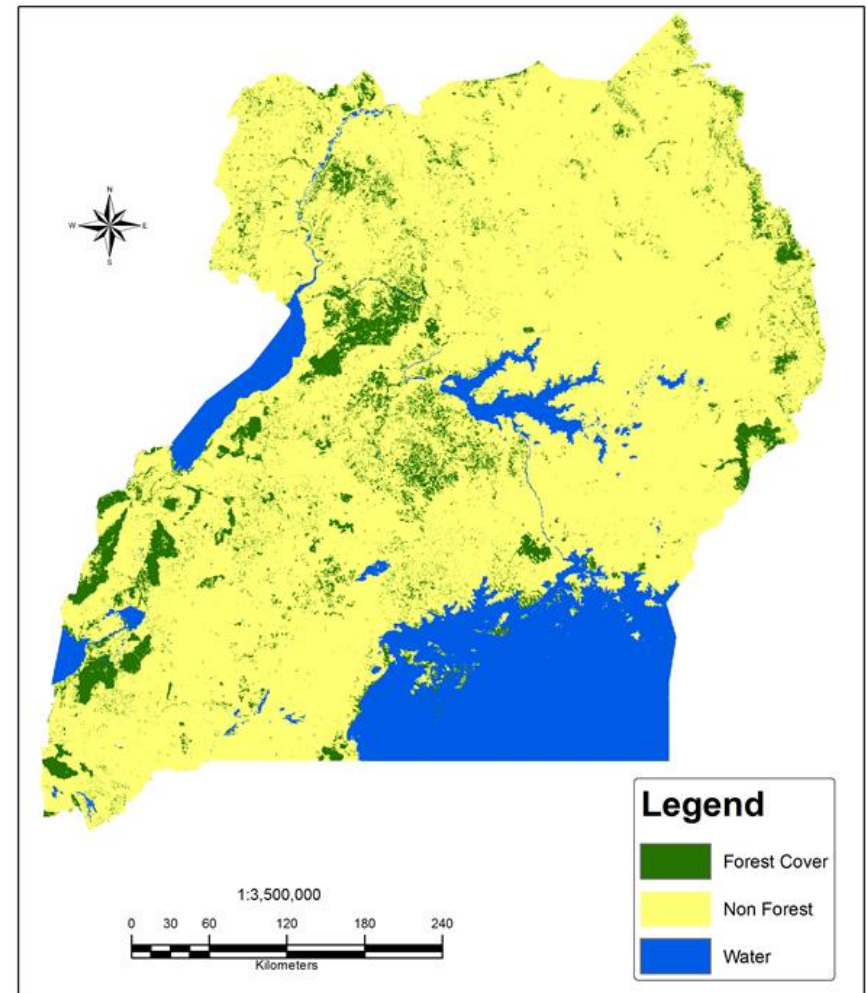
- **Improved partnership arrangements;** 4 initiation CFM meetings were carried out, 19 CFM meetings were held: 3CFM were initiated-1 in Opit for Wiageng community, 1 sensitisation meeting-N/Rwenzori.
- **Financial performance**
- NFA non-tax revenue and government support approved budget for FY 2017/18 is UGX 29.508bn. During the first 6 months (Jul-Dec), Ministry of Finance released Shs. 10.393bn in which 6.337bn was spent representing 61.0%.
- The total expenditure for the quarter amounted to UGX 2.9bn Vs 7.247bn rep. 41.2%; of which UGX 2.7 was spent on Payroll overheads (personnel Costs).

Trend of forest cover in the country

Natural Forest Cover In Uganda 1990



Natural Forest Cover in Uganda by 2015



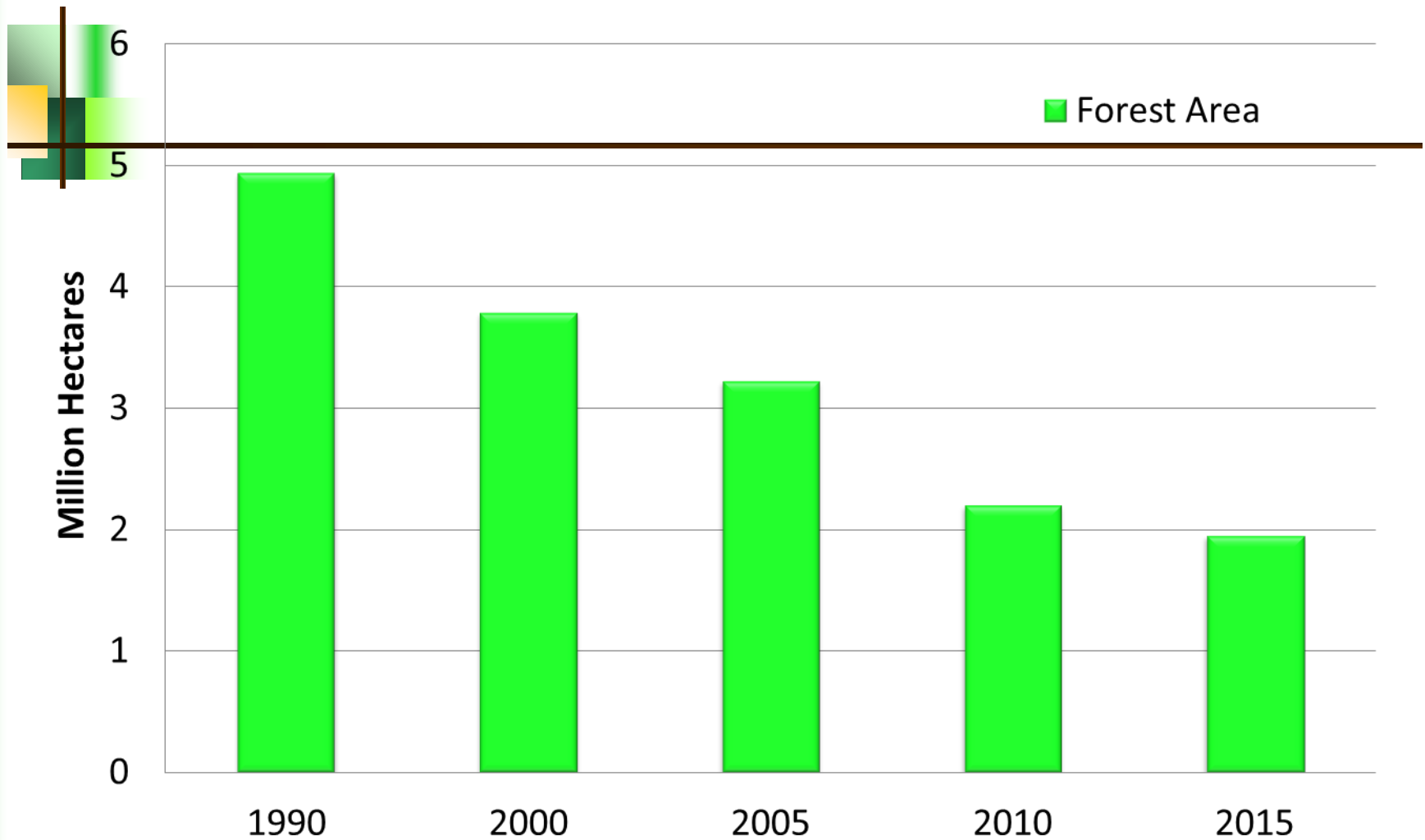
Forest Cover Statistics

	1990	2000	2005	2010	2015
Forest_All	4,933,271	3,785,167	3,220,546	2,196,631	1,956,664
Forest_UWA	794,881	720,057	670,372	600,986	624,578
Forest_NFA	791,240	626,192	595,841	531,795	504,391
Forest_PVT	3,347,150	2,438,919	1,954,333	1,063,851	827,695
Forest_PAs	1,586,121	1,346,249	1,266,213	1,132,780	1,128,969

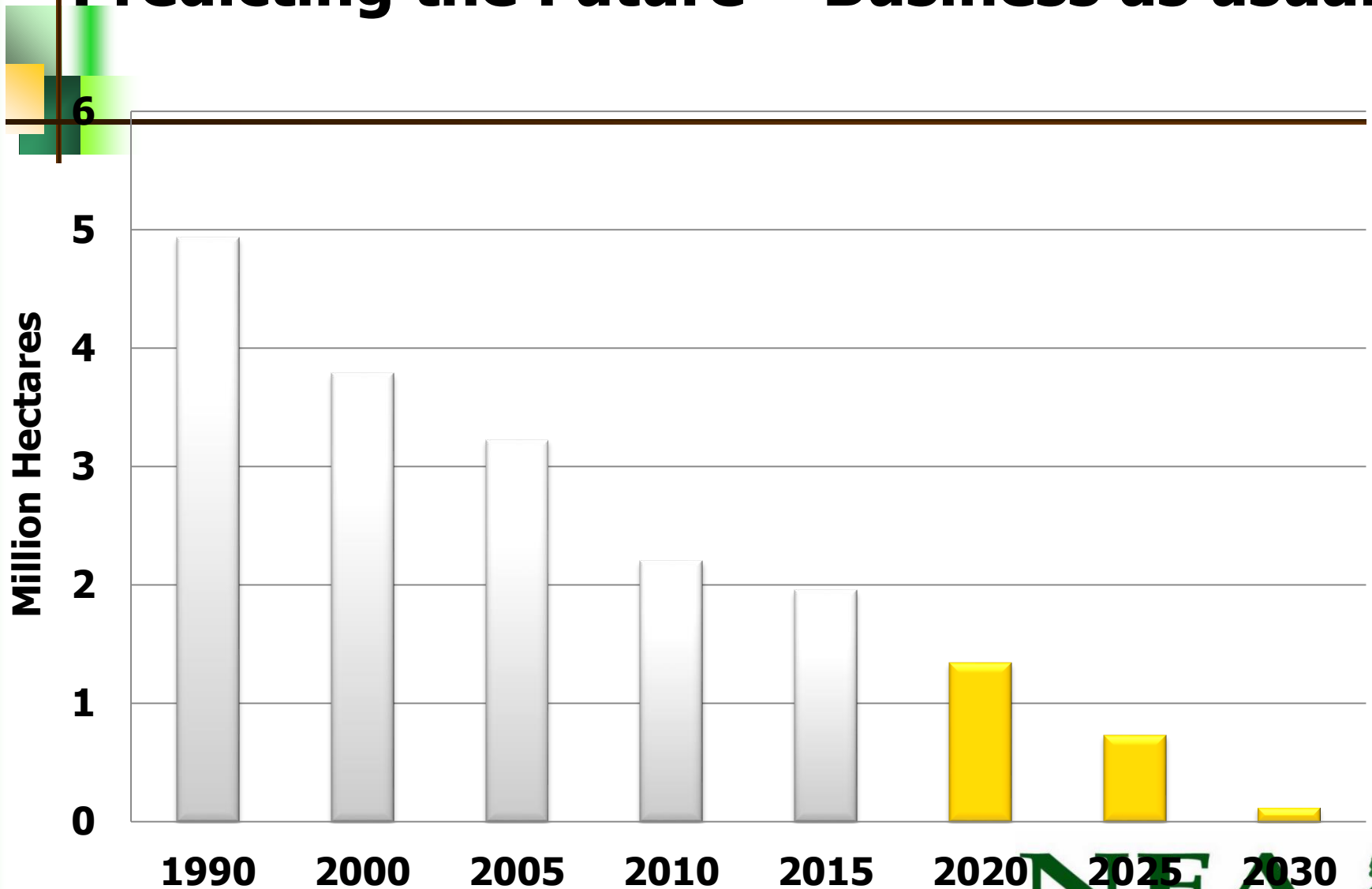
Rate of Deforestation

	90to00	00to05	05to10	10to15
Forest_All	-2.3%	-3.0%	-6.4%	-2.2%
Forest_UWA	-0.9%	-1.4%	-2.1%	0.8%
Forest_NFA	-2.1%	-1.0%	-2.1%	-1.0%
Forest_PVT	-2.7%	-4.0%	-9.1%	-4.4%
forest_Pas	-1.5%	-1.2%	-2.1%	-0.1%

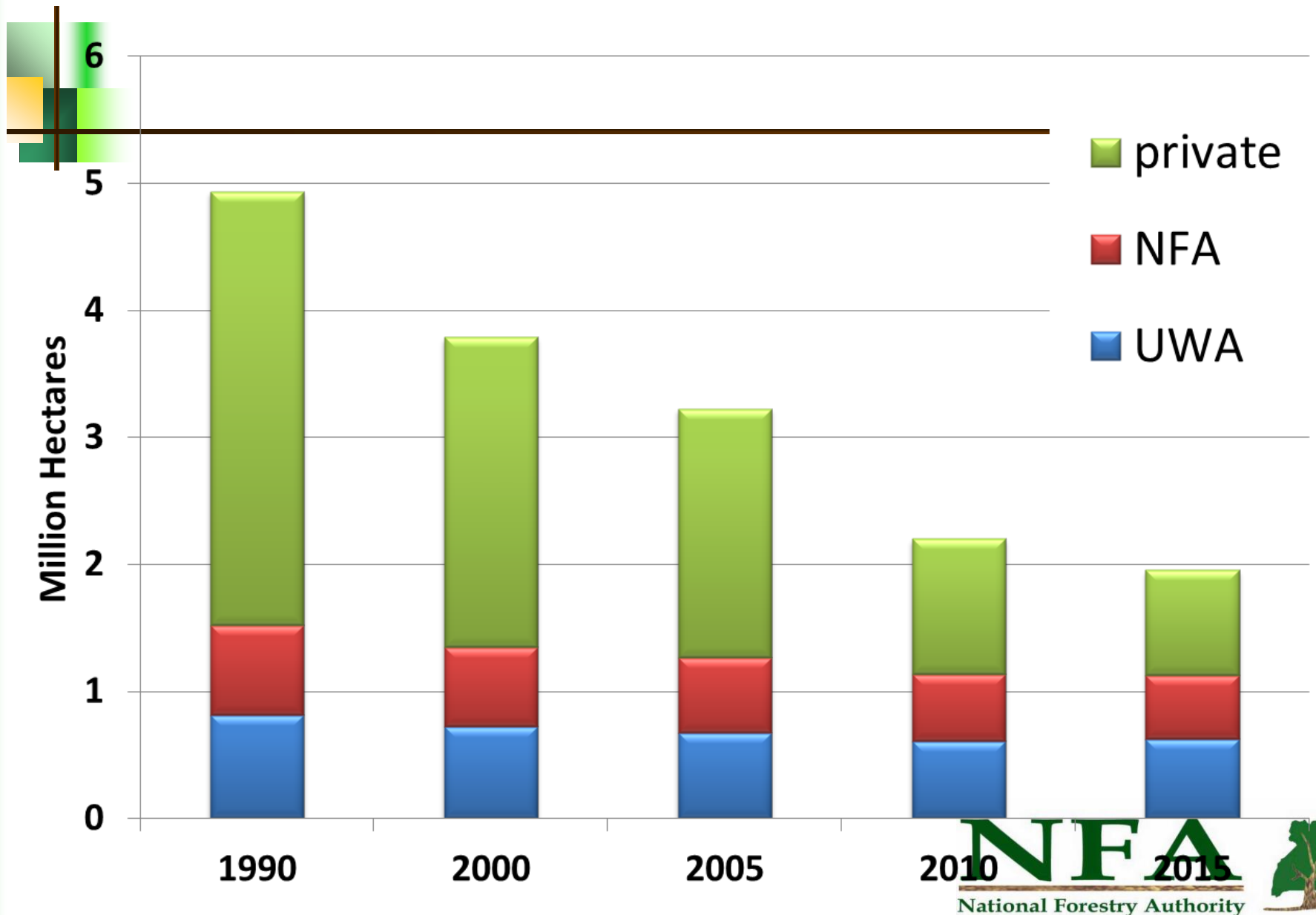
Trend of forest cover over 25 years



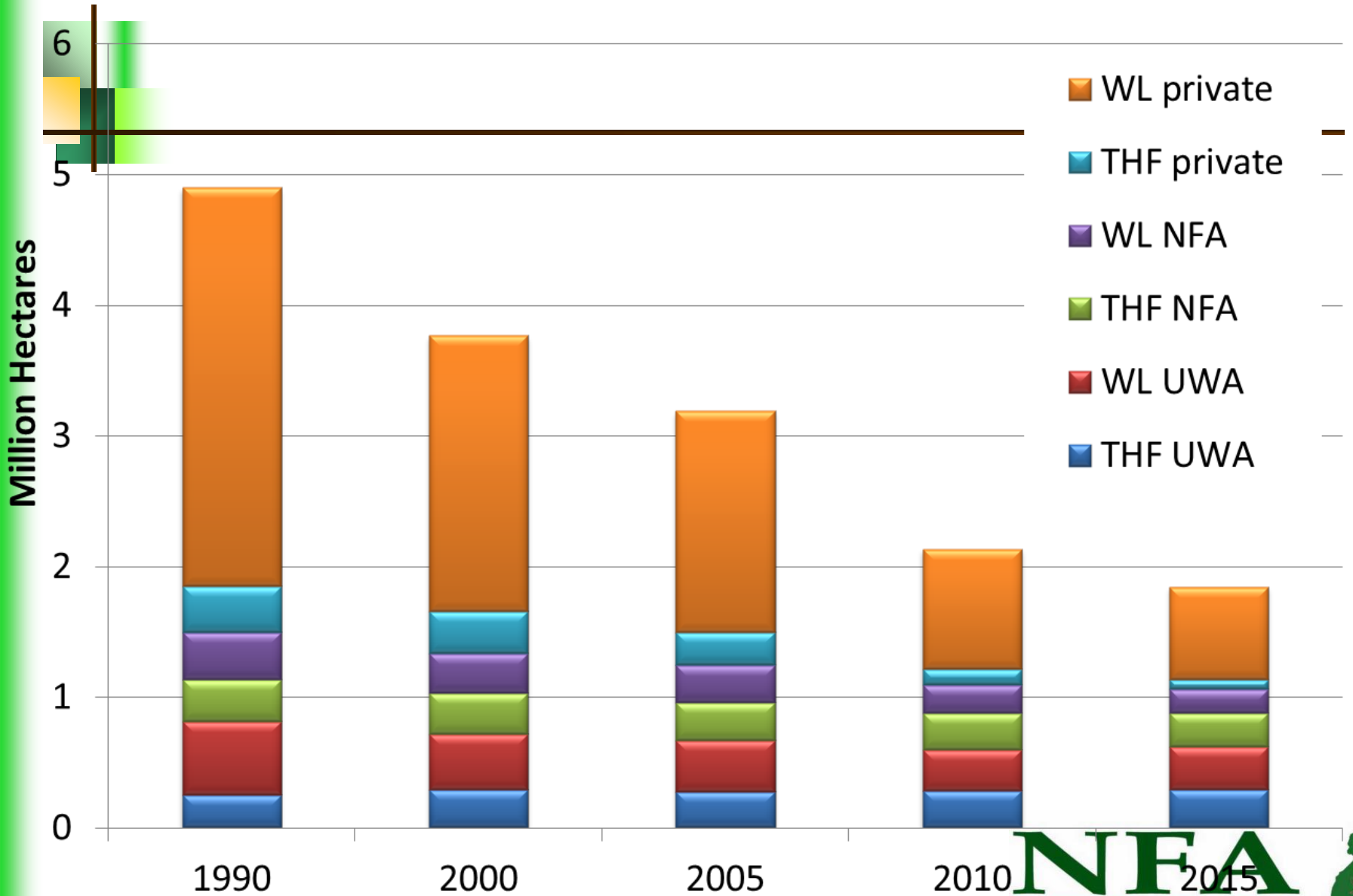
Predicting the Future – Business as usual



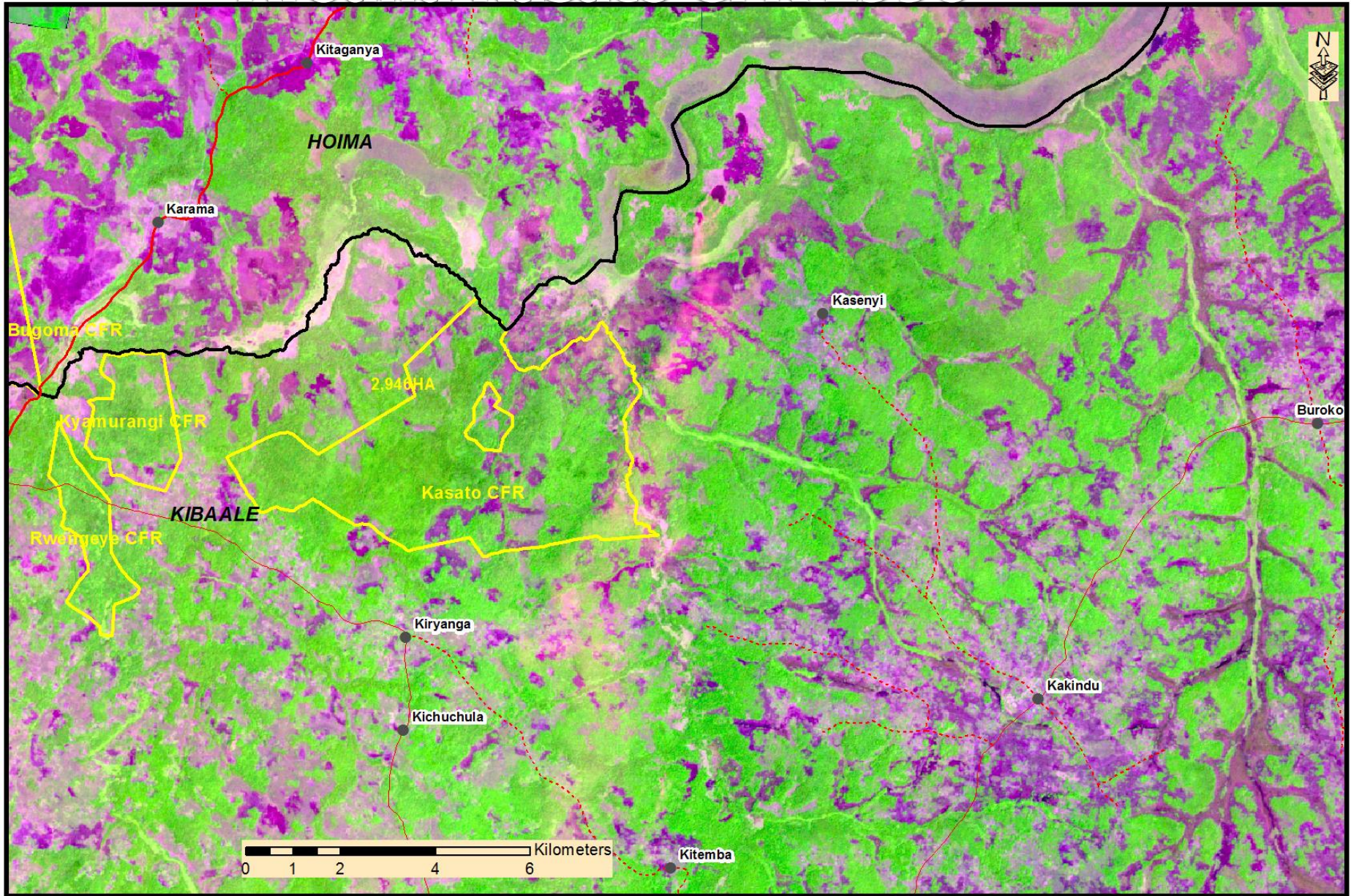
Management and forest area change



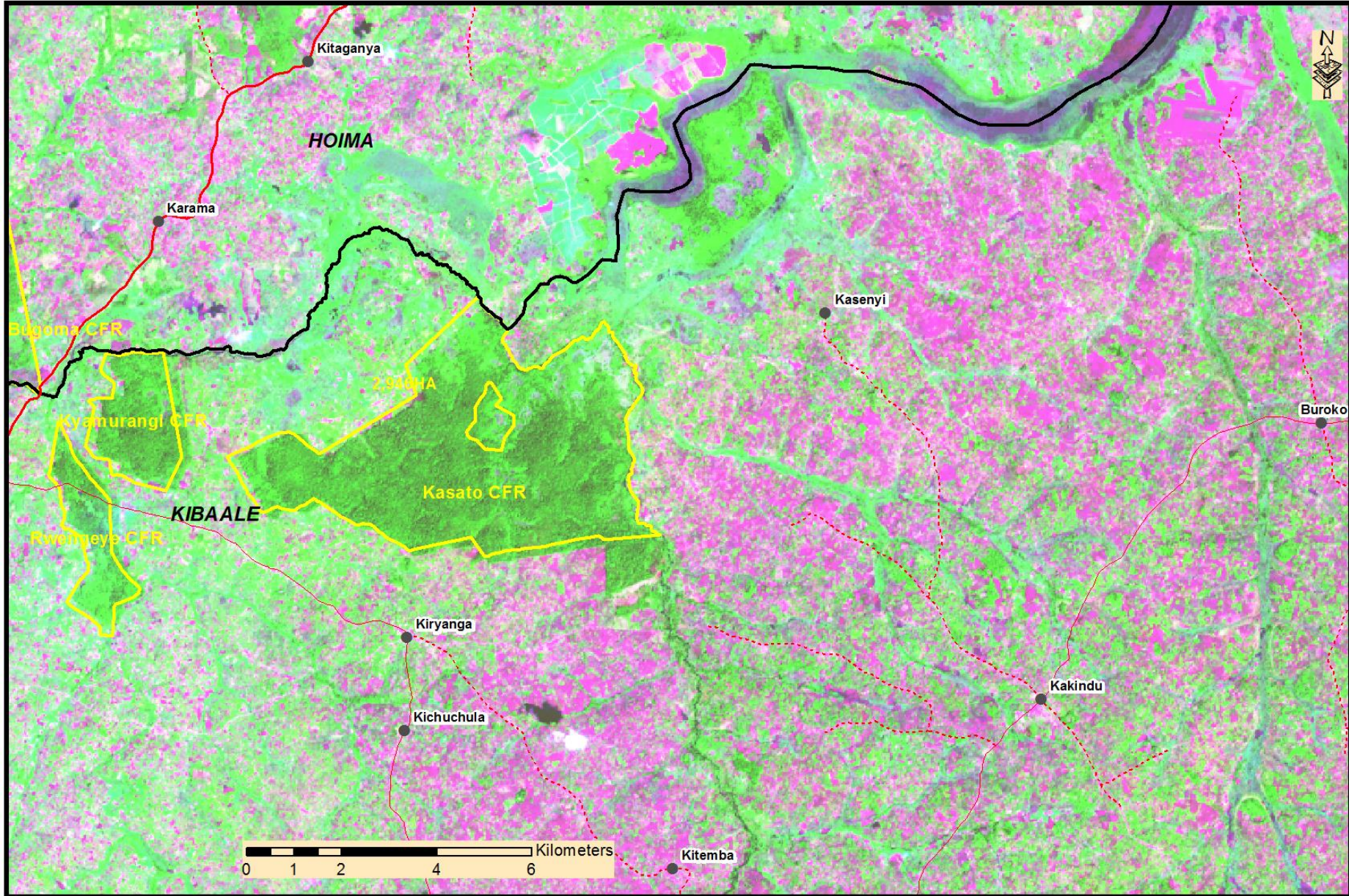
Changes in tropical high forest and woodland



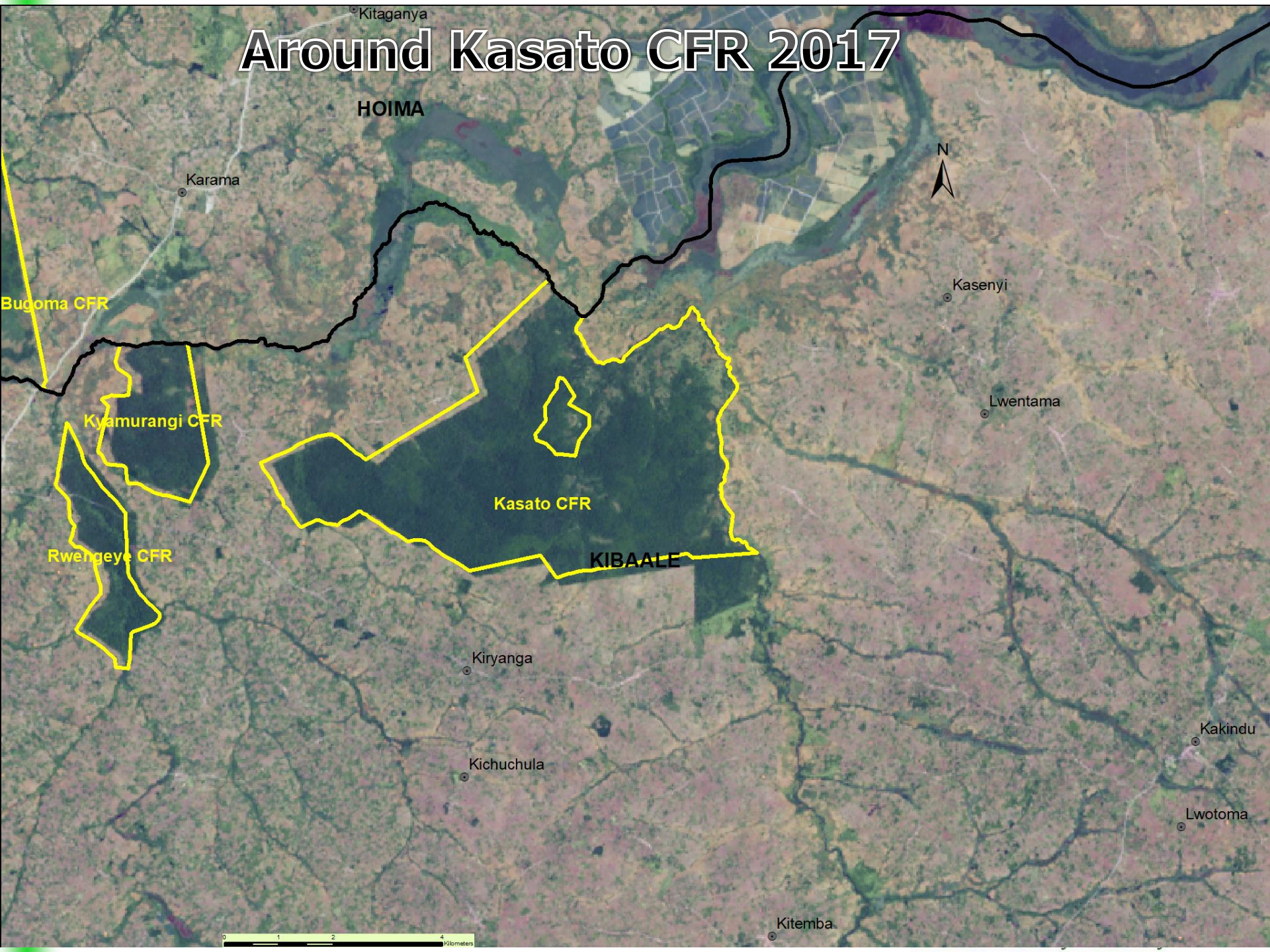
Around Kasato CFR 1990



Around Kasato CFR 2015



Around Kasato CFR 2017



Kitaganya

HOIMA

Karama

N

Kasenyi

Lwentama

Kyamurangi CFR

Kasato CFR

KIBAALE

Rwengeye CFR

Kiryanga

Kichuchula

Kitemba

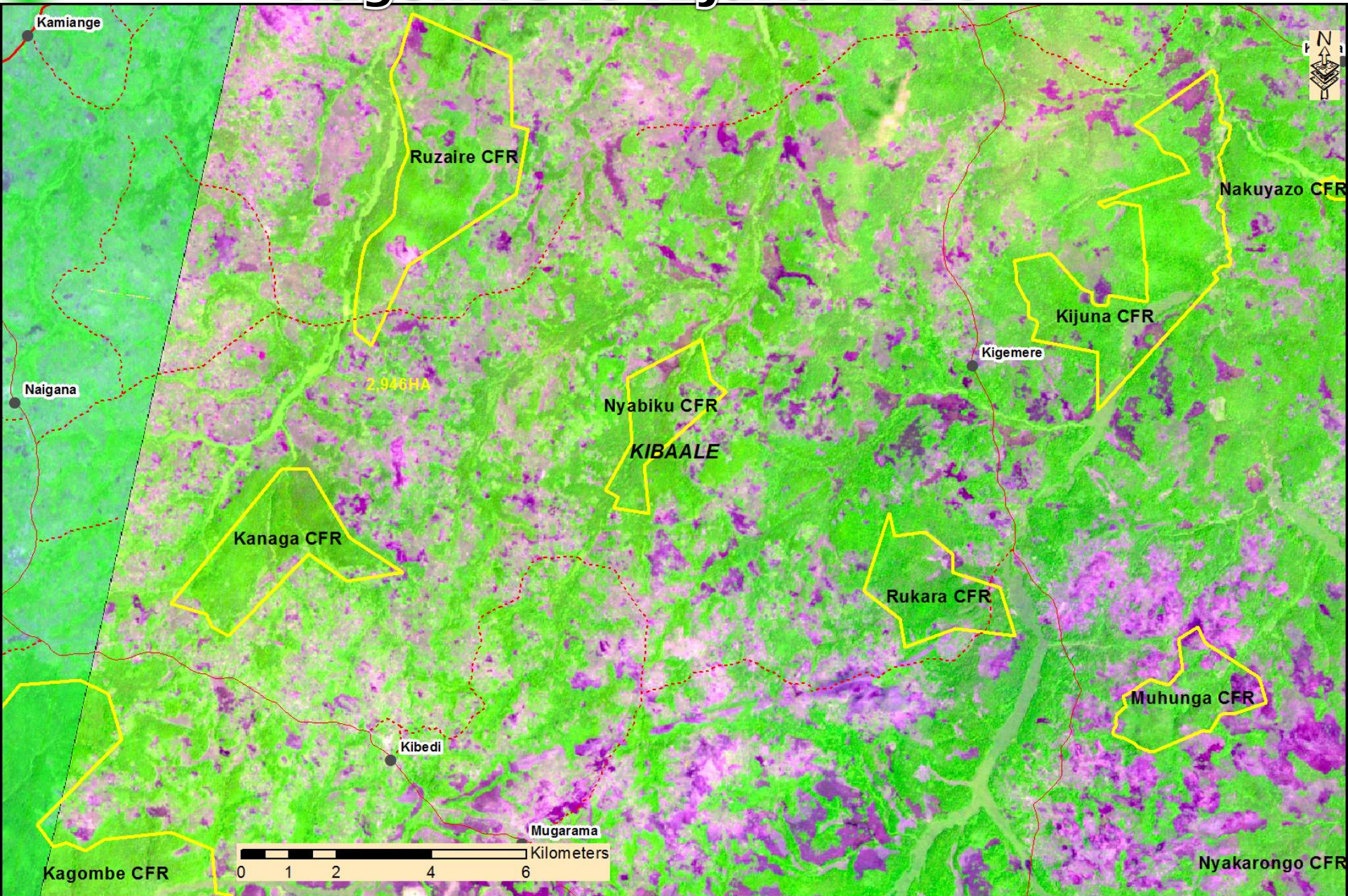
Kakindu

Lwotoma

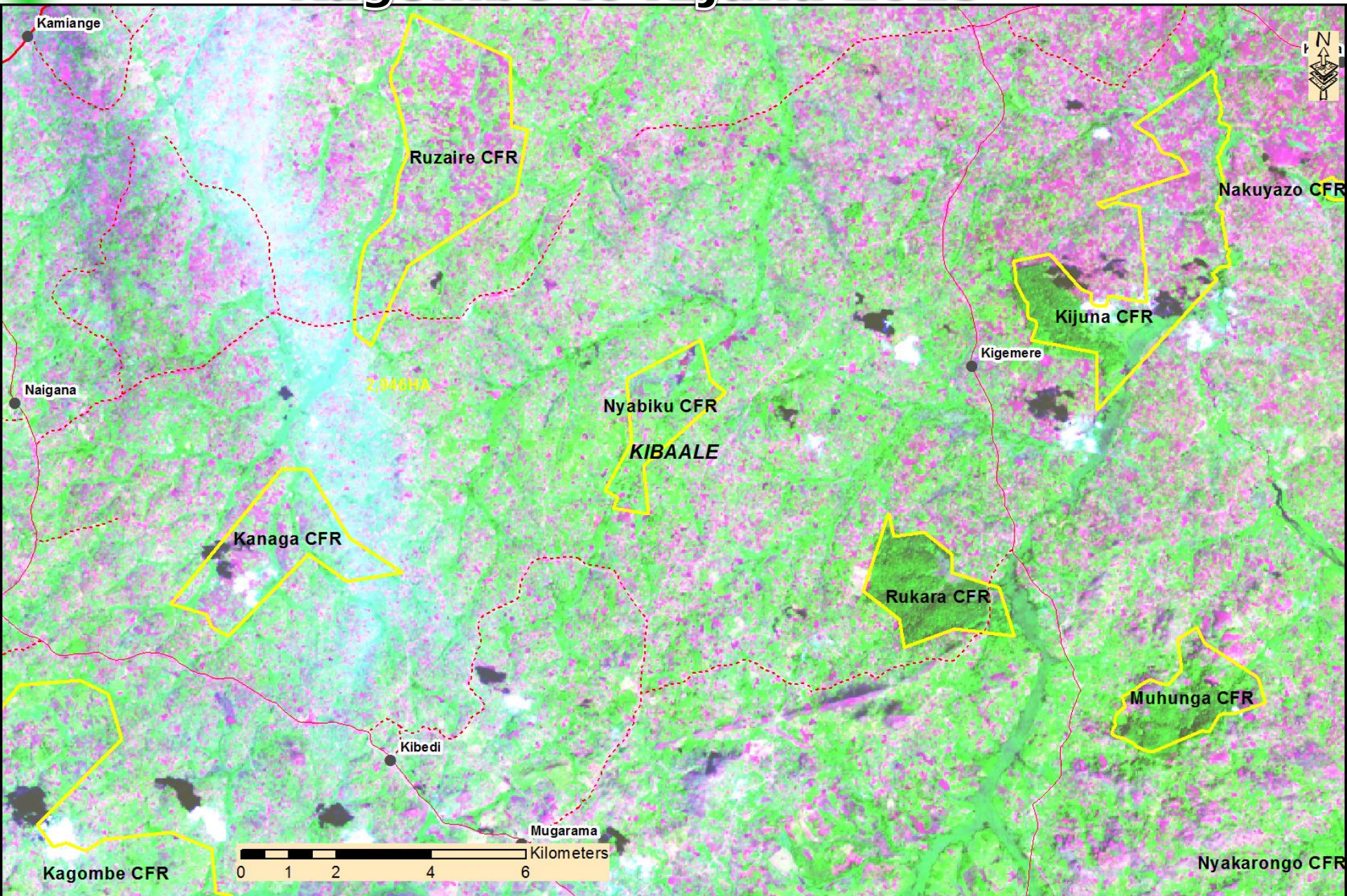
Bugoma CFR

0 1 2 4 Kilometers

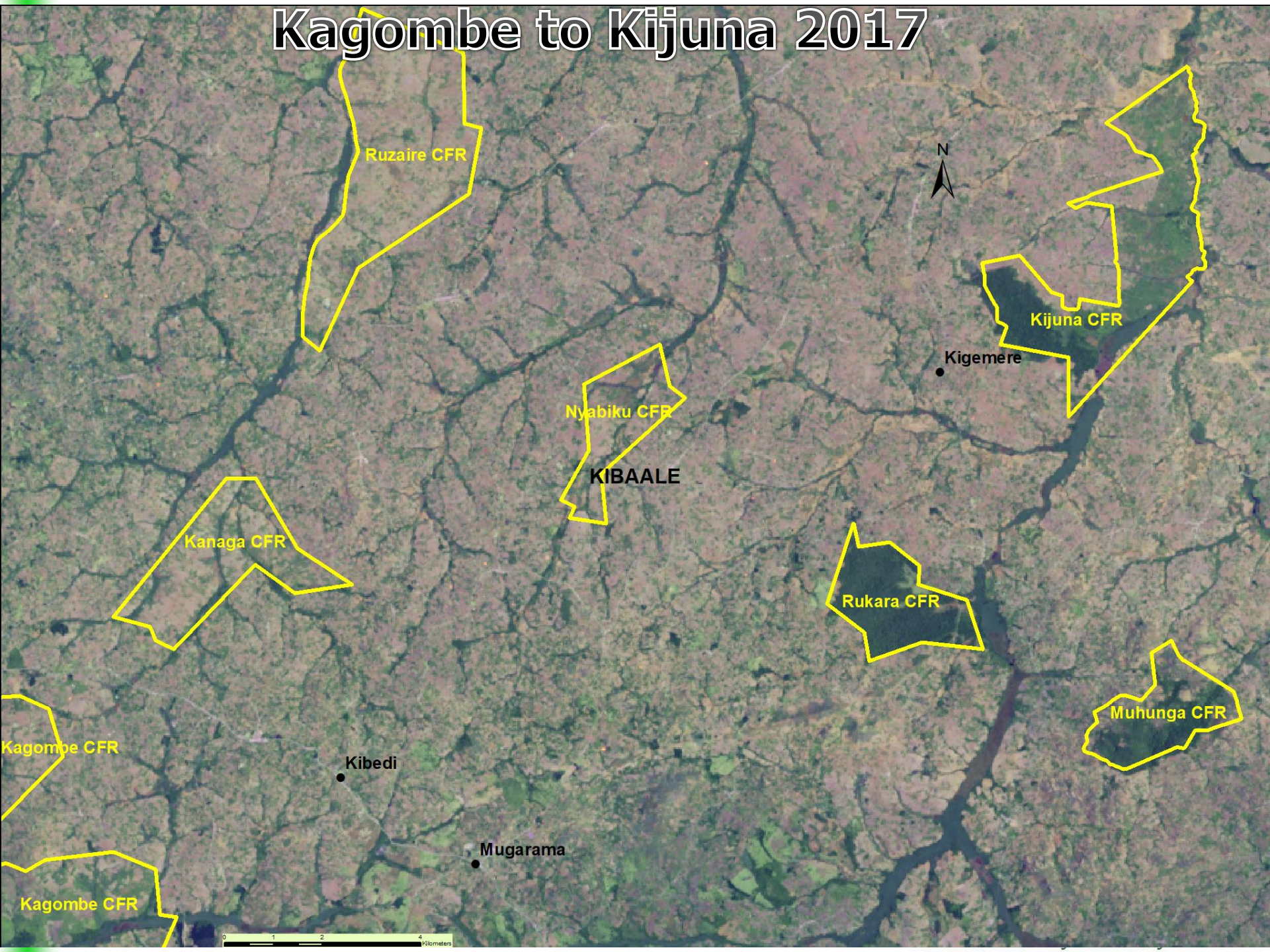
Kagombe to Kijuna 1990



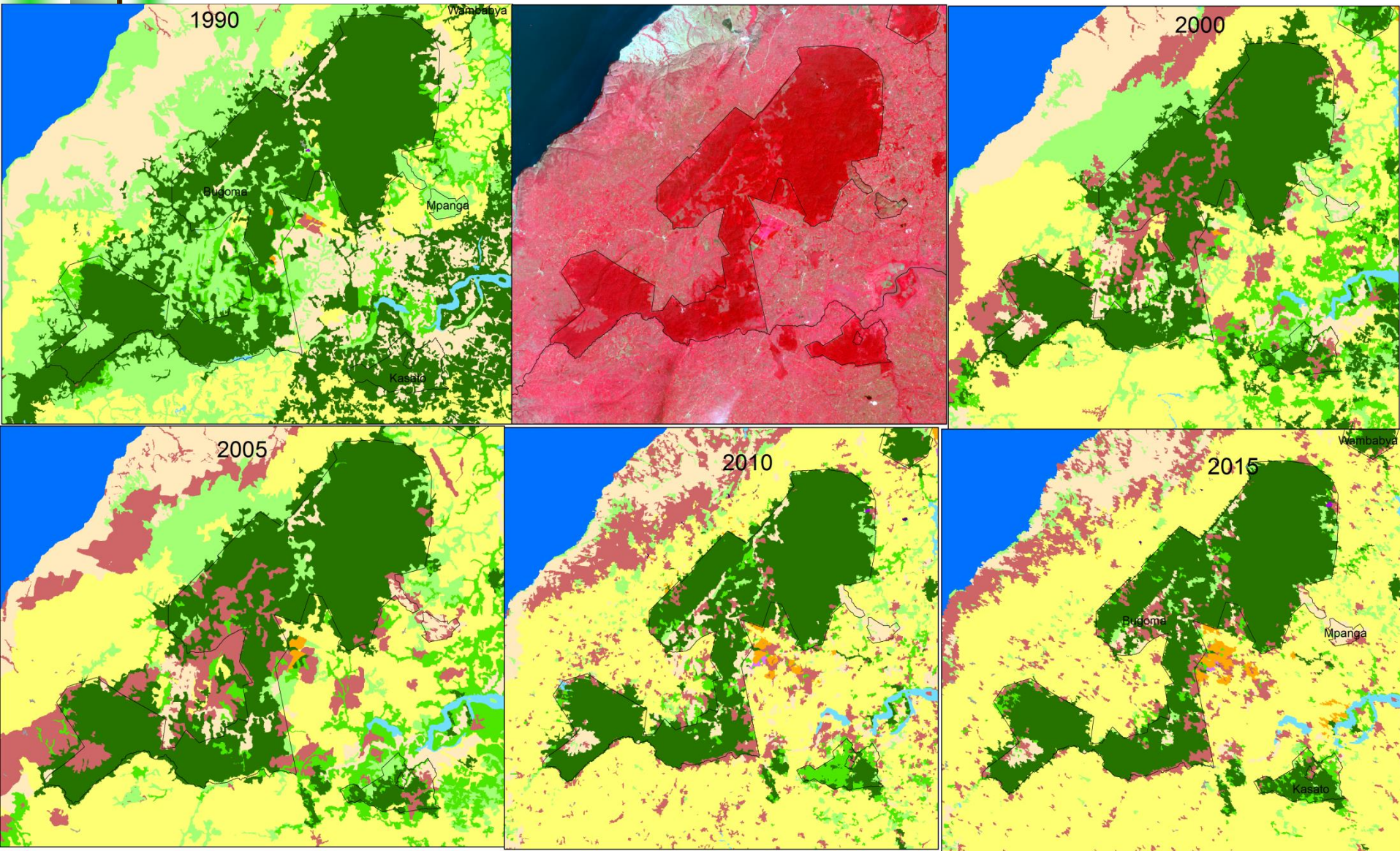
Kagombe to Kijuna 2015



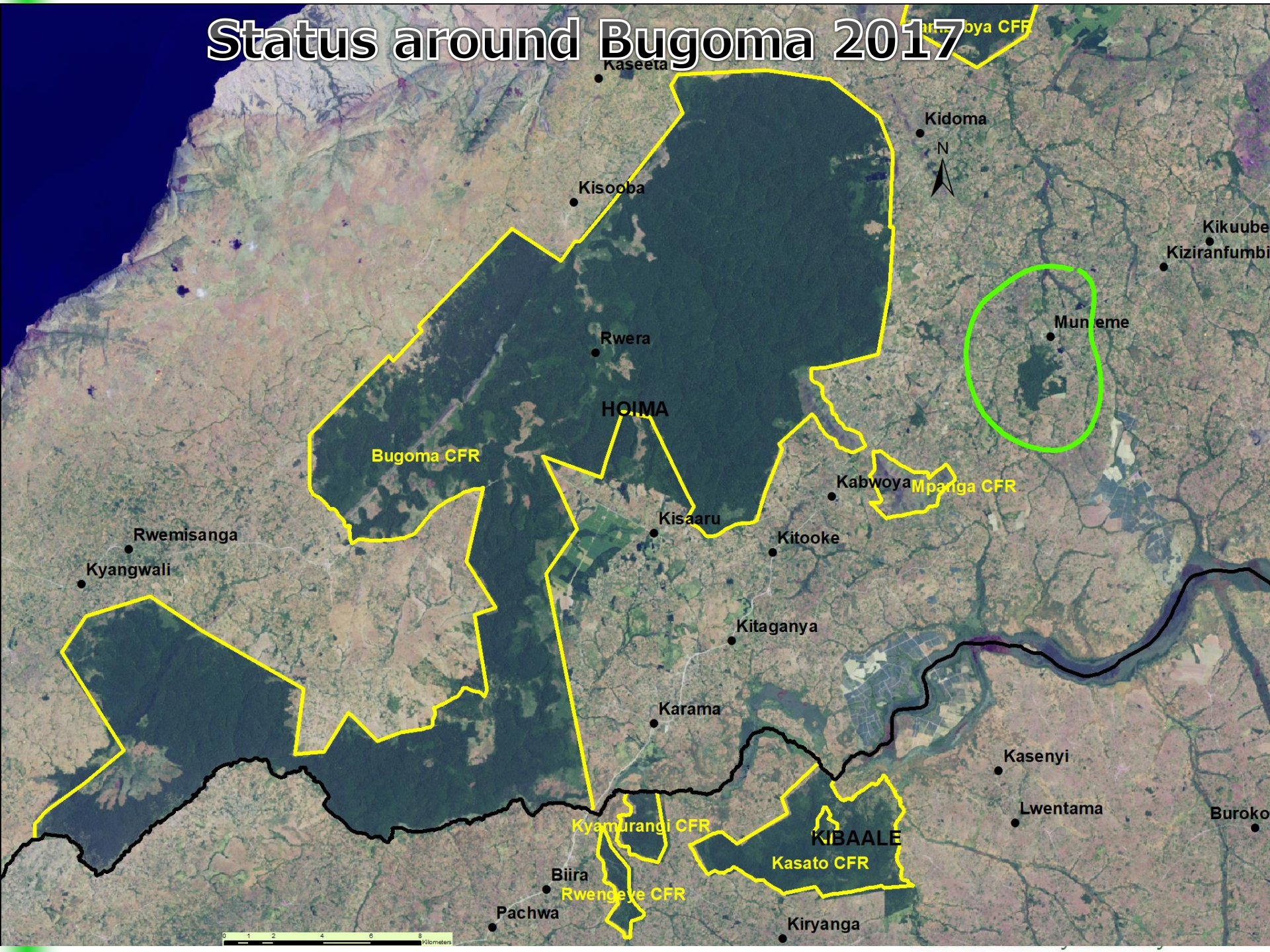
Kagombe to Kijuna 2017



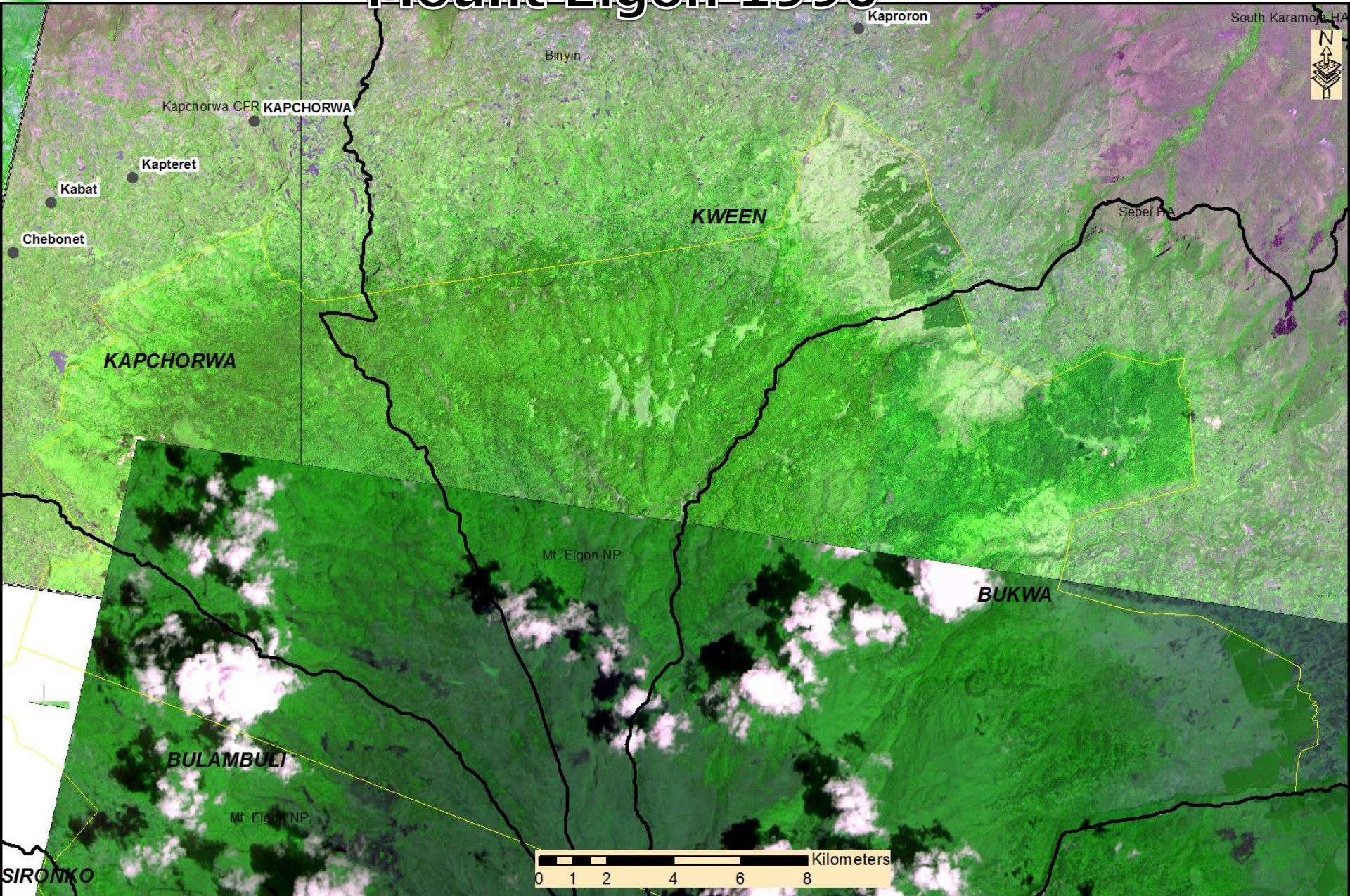
Trends around Bugoma CFR



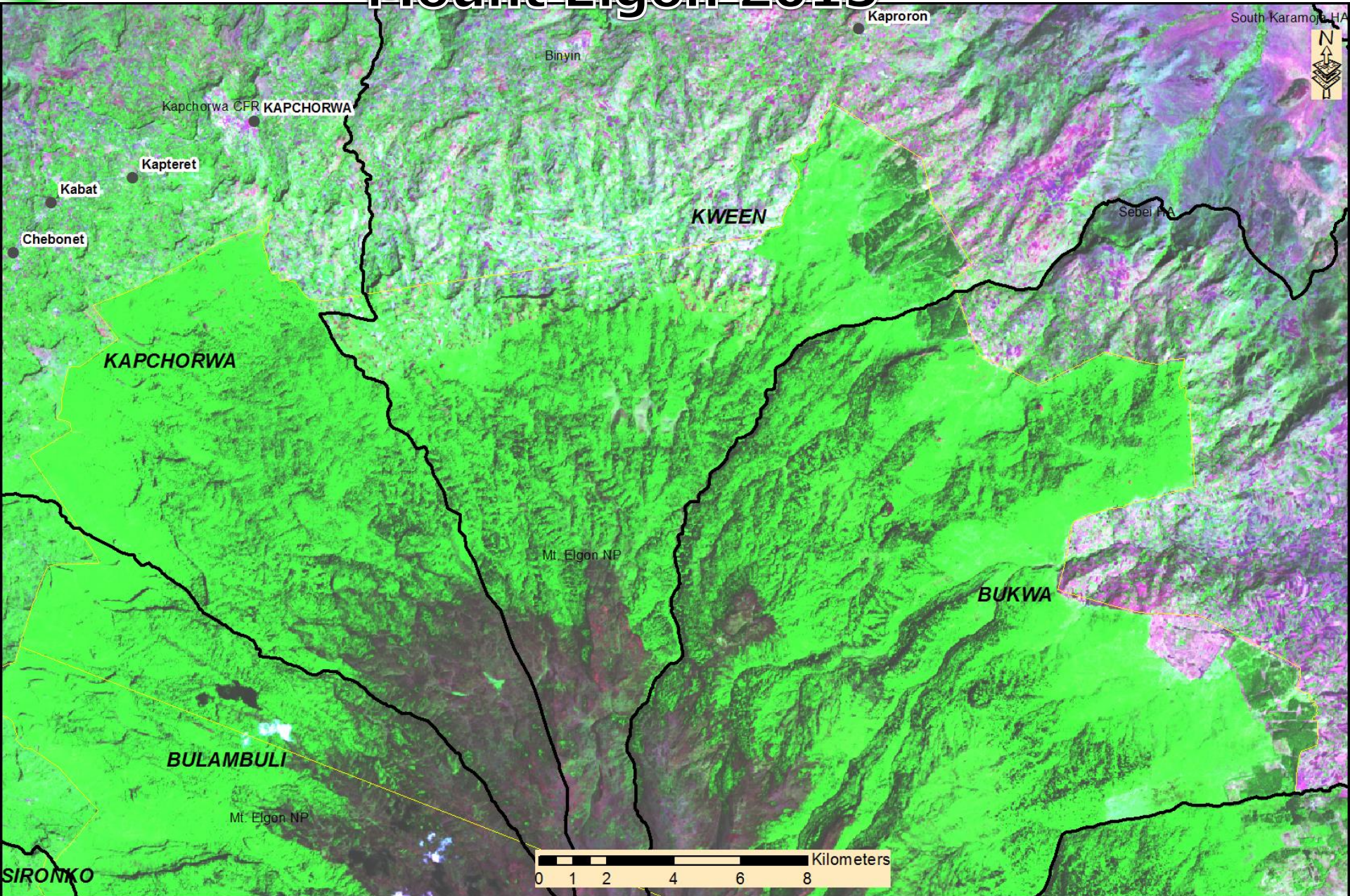
Status around Bugoma 2017



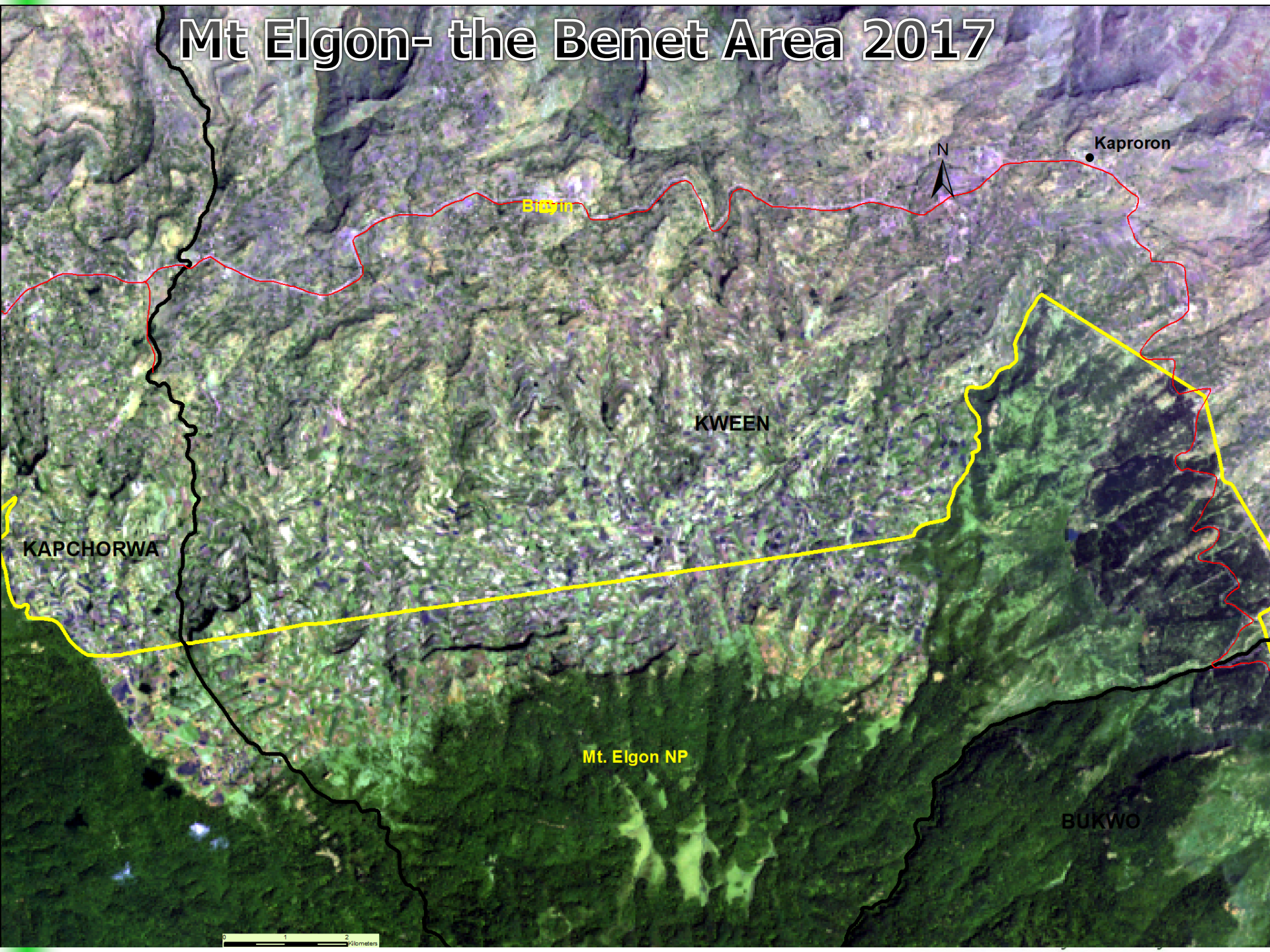
Mount Elgon 1990



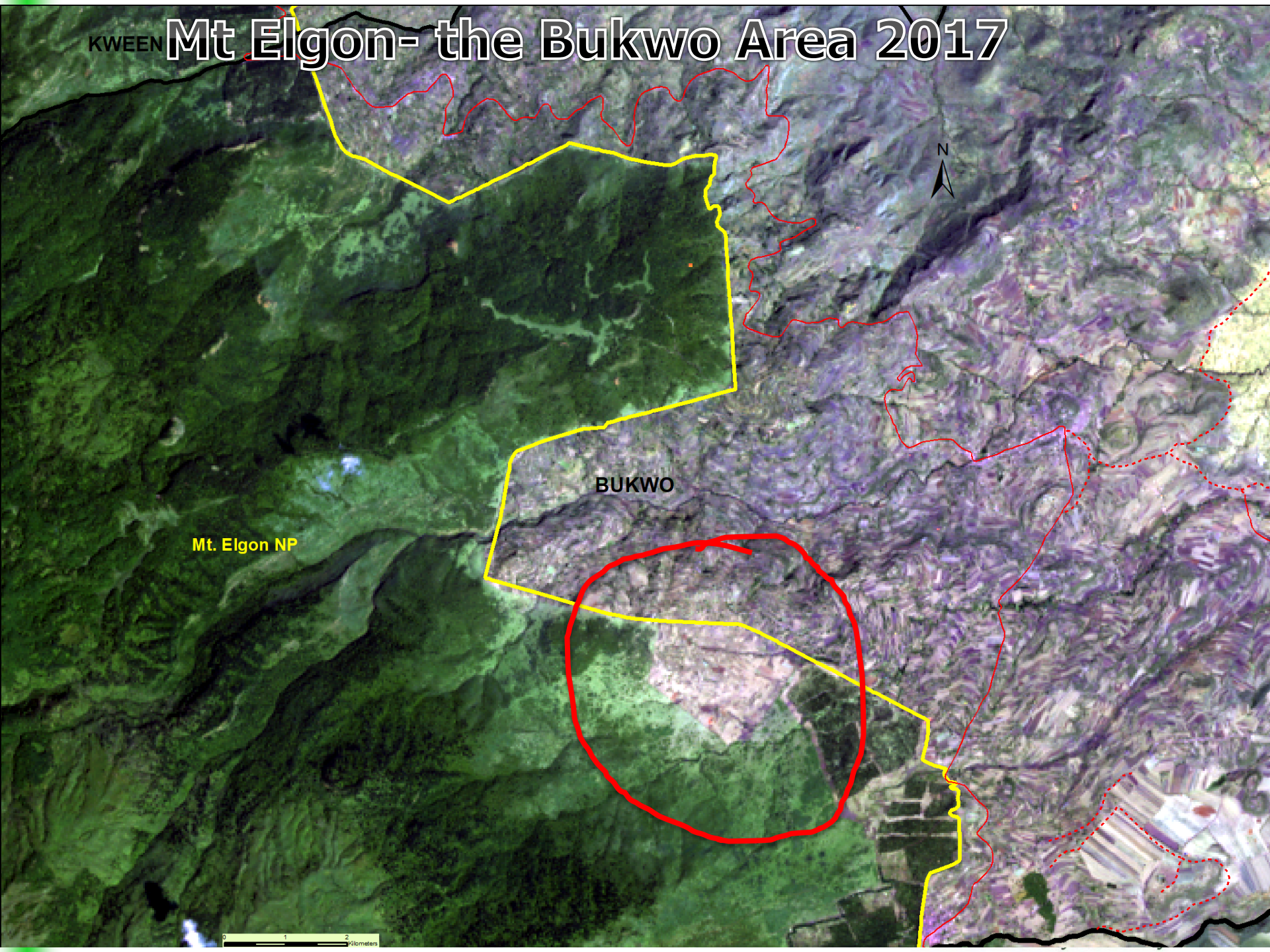
Mount Elgon 2015



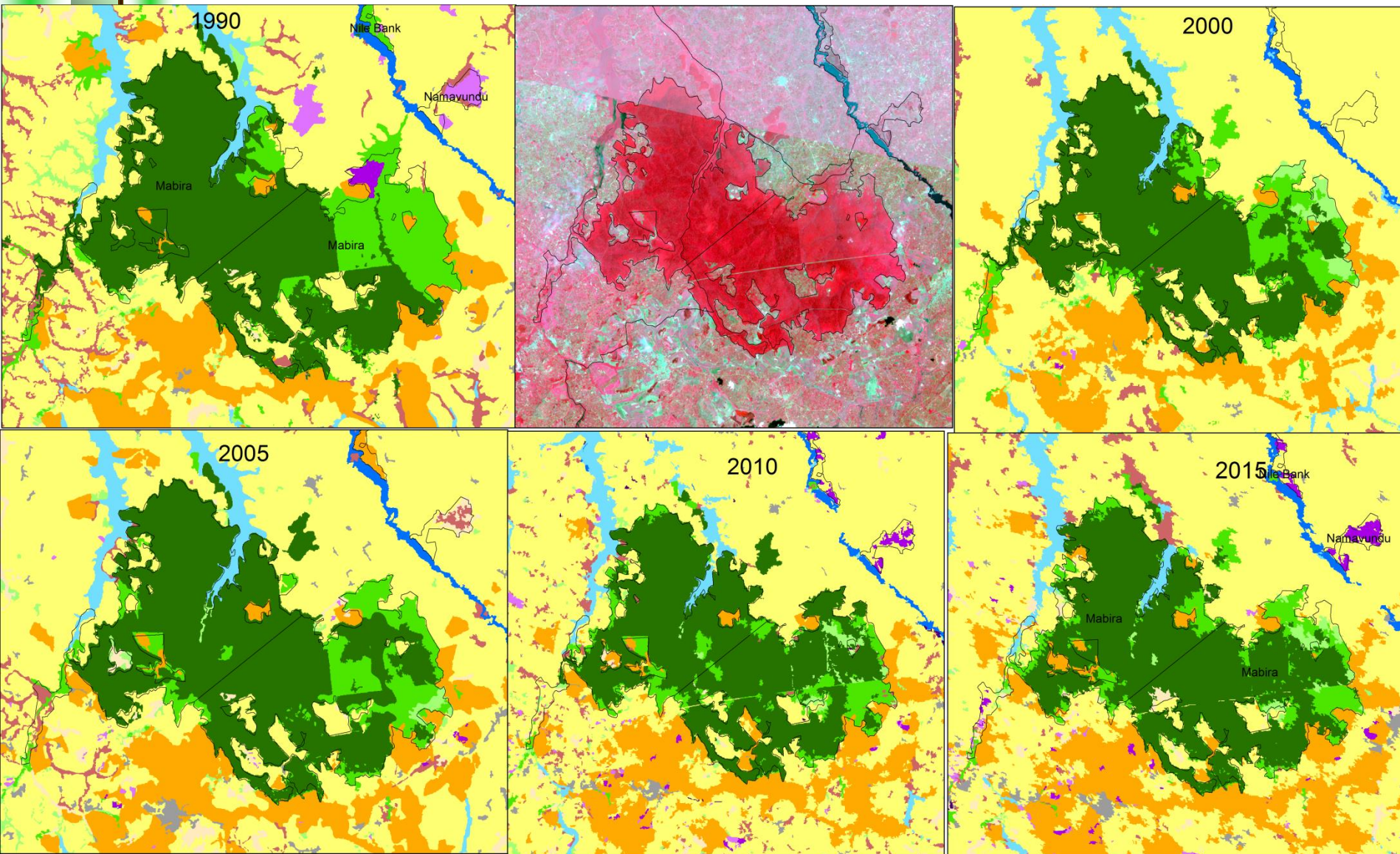
Mt Elgon- the Benet Area 2017



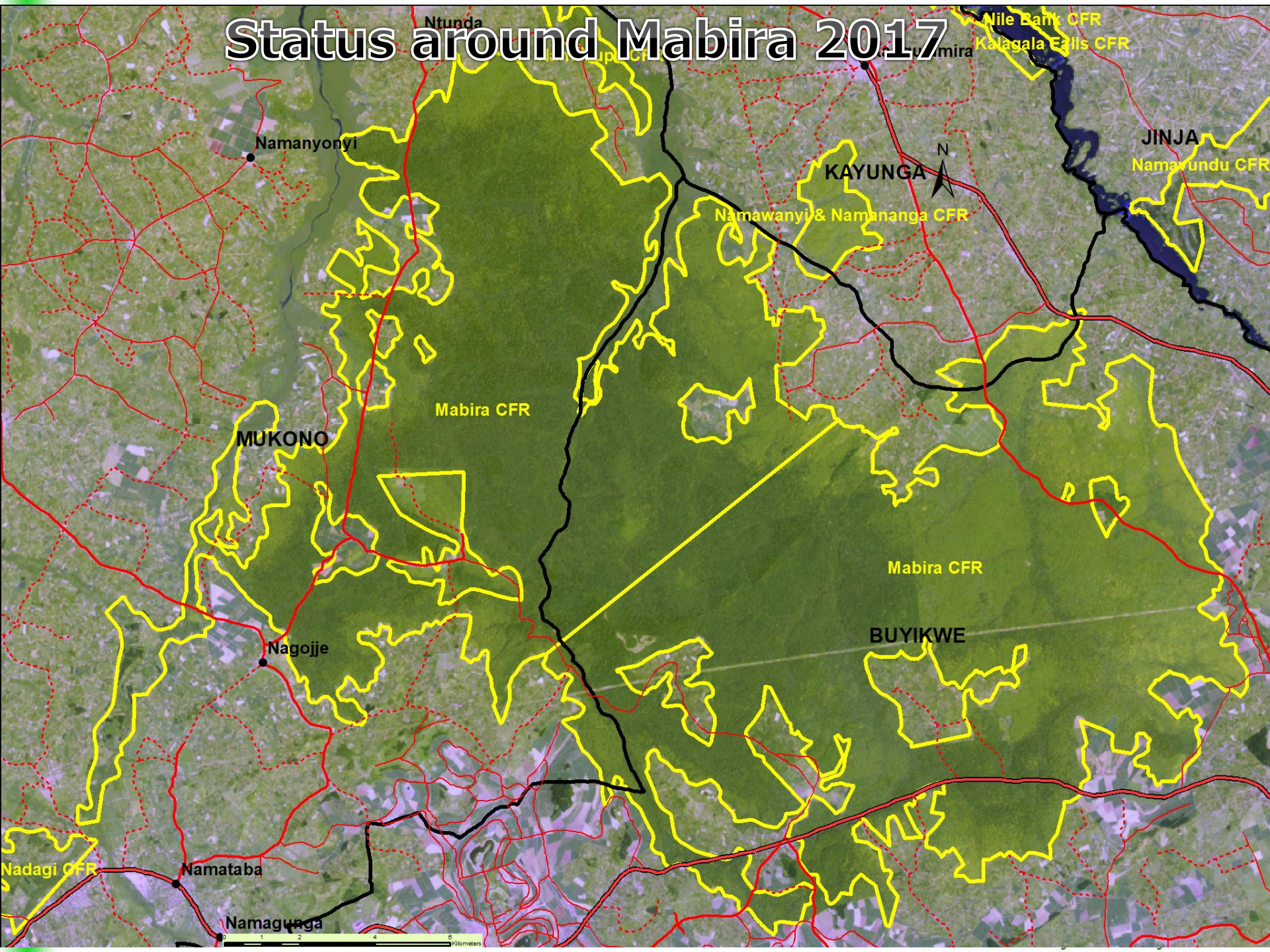
KWEEN Mt Elgon- the Bukwo Area 2017



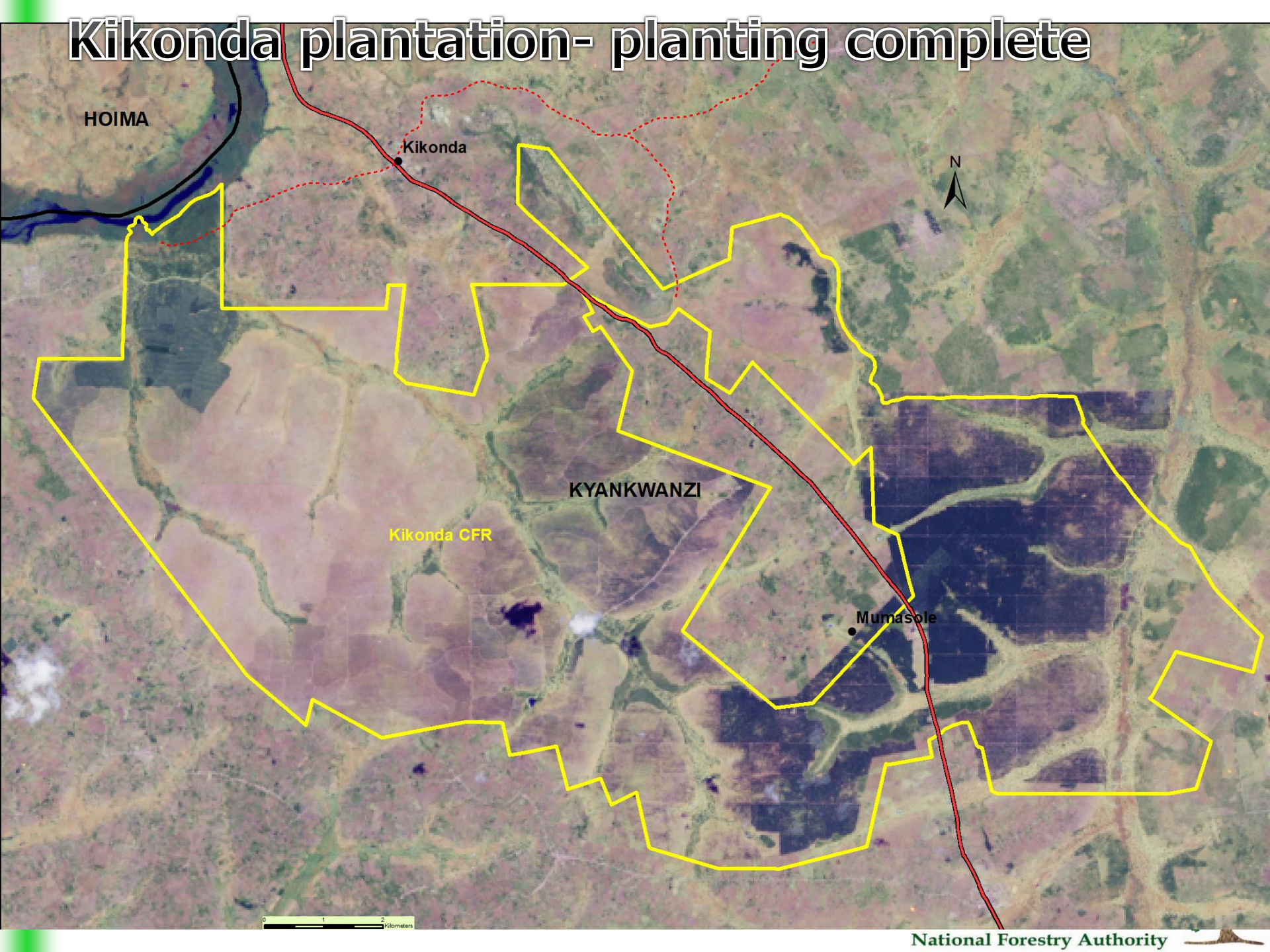
Mabira- A success story of forest restoration and conservation



Status around Mabira 2017



Kikonda plantation- planting complete



HOIMA

Kikonda



KYANKWANZI

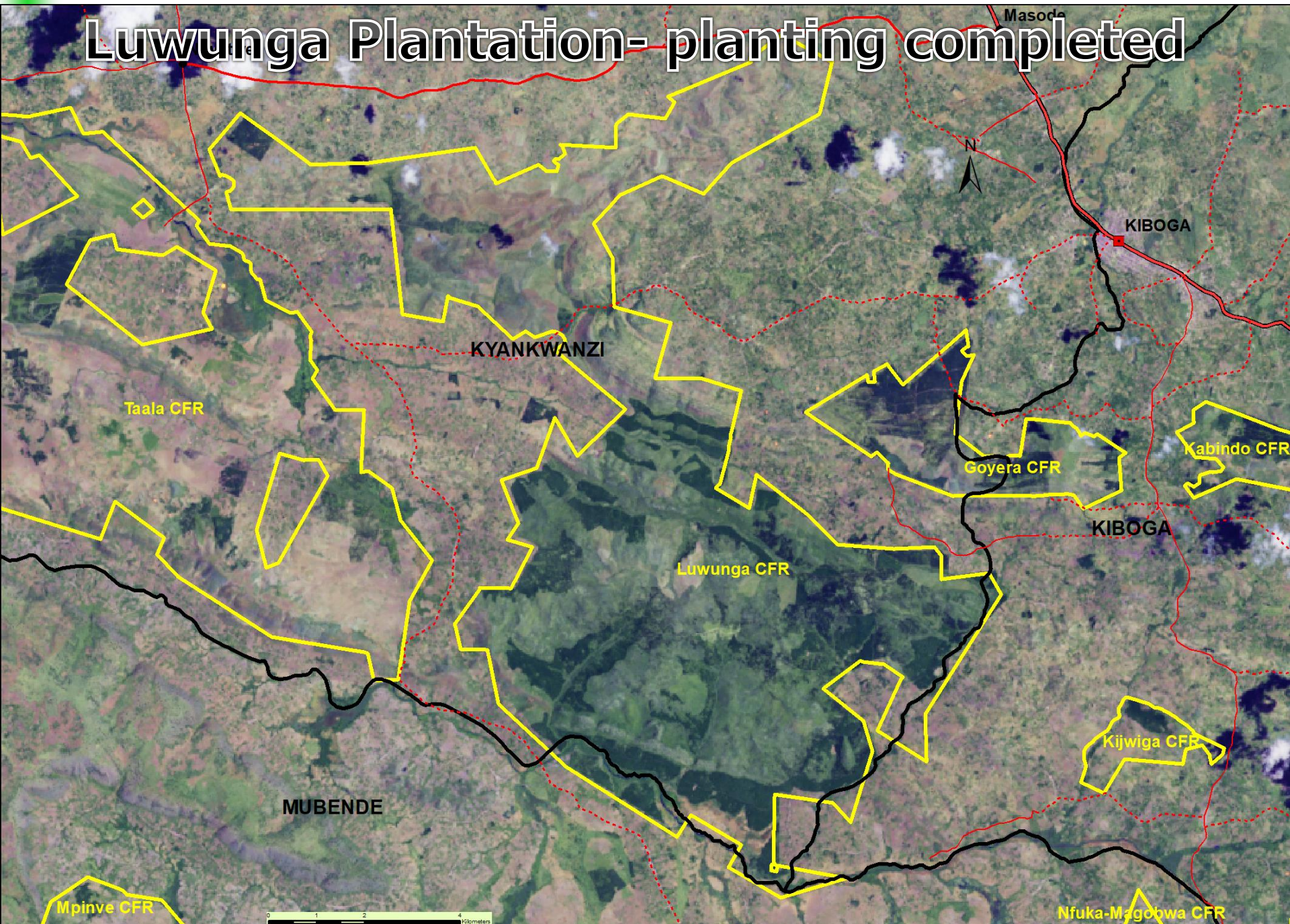
Kikonda CFR

Mumasole

0 1 2 Kilometers



Luwunga Plantation- planting completed



Conclusion

- Forest cover is still too low
- There should be enhanced investment in forest establishment- for sustainable management
- Severely punish environmental criminals
- Have an environmental court to handle environmental crimes- benchmark the wildlife court
- Establish an armed force to protect forests
- Forests are a common good, do not regard them as a primary revenue source.



THE END

THANKS FOR LISTENING